

Design Guidelines and Standards For The Historic Character Overlay District (D-2.4)

Update Adopted by City Council

**Ordinance No. 608
February 10, 2009**

**Resolution No. 4135
October 14, 2008**

**Resolution No. 3673
April 22, 2003**

Adopted by City Council
**Resolution No. 3059
November, 1994**

© 1991, City of Arroyo Grande
and Catherine Graves
All Rights Reserved

Table of Contents

DESIGN OVERLAY DISTRICT MAP FOR HISTORIC DISTRICTS..... 5

INTRODUCTION 6

 CONCEPT OF THE GUIDELINES AND STANDARDS 6

Objectives 6

 HOW THE GUIDELINES AND STANDARDS WERE DEVELOPED AND AMENDED 7

 HOW TO USE THE GUIDELINES AND STANDARDS 7

Exceptions to Guidelines 7

Exceptions to Standards 8

 PROCESS FOR IMPLEMENTING GUIDELINES AND STANDARDS IN HISTORIC DISTRICTS..... 9

 DESIGN REVIEW IN ARROYO GRANDE 10

Community Development Director..... 10

Architectural Review Committee..... 10

Planning Commission..... 10

City Council..... 10

 REQUIRED APPLICATION SUBMITTAL DOCUMENTS AND MATERIALS 11

 PROJECTS SUBJECT TO THE GUIDELINES AND STANDARDS 11

Demolition or Relocation Permit 12

Plot Plan Review 12

 PROJECTS NOT SUBJECT TO THE GUIDELINES AND STANDARDS 12

HISTORIC OVERVIEW 13

 HISTORY OF ARROYO GRANDE 13

OVERALL DESIGN FRAMEWORK 15

 GATEWAYS 15

 LANDMARKS 15

 NODES 15

 DISTRICTS 16

 PATHS 16

 EDGES OR SEAMS 16

 NATURAL AREAS 16

ARCHITECTURAL STYLES 17

 RESIDENTIAL STRUCTURES 17

Bungalow..... 17

Cottage 17

Craftsman..... 17

Folk Victorian..... 18

Queen Anne 18

Spanish Eclectic 18

 COMMERCIAL STRUCTURES 19

Late Nineteenth Century Commercial..... 19

CONSTRUCTION MATERIALS 20

 WEATHERBOARD OR CLAPBOARD WOOD SIDING 20

 CEMENT PLASTER 20

 YELLOW INDIGENOUS SANDSTONE 20

BRICK AND STONE BLOCK..... 21

WINDOW SASHES AND DOOR FRAMES..... 21

VILLAGE RESIDENTIAL DISTRICTS (VRD) 22

EXISTING CHARACTER 22

Similarity in Height, Mass and Scale 22

Similarity of Material 22

Sense of Experimentation 23

Variety in Building Form..... 23

DESIGN GUIDELINES AND STANDARDS 23

Site Design..... 23

Building Design..... 23

Garage/Parking..... 26

Construction Materials..... 27

Building Colors 27

VILLAGE CORE DOWNTOWN (VCD) 28

MIXED USES WITHIN THE DISTRICT 28

EXISTING CHARACTER 28

Similarity in Height, Mass and Scale 28

Similarity of Material 29

Sense of Experimentation 29

Pedestrian Orientation 29

Variety in Building Form..... 29

DESIGN GUIDELINES AND STANDARDS 29

Mixed Use Projects Within the Village Core Downtown 29

Site Design..... 30

Building Design..... 30

Construction Materials..... 30

Building colors 31

VILLAGE MIXED USE (VMU)..... 32

EXISTING CHARACTER 32

Diversity in Scale..... 32

Similarity of Material 32

Sense of Experimentation 33

Variety in Building Form..... 33

DESIGN GUIDELINES AND STANDARDS 33

Site Design..... 33

Building Design..... 34

Construction Materials..... 35

Building Colors 35

SIGNS, AWNINGS AND REAR ENTRIES 36

SIGNS 36

General..... 36

Size..... 36

Location..... 36

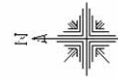
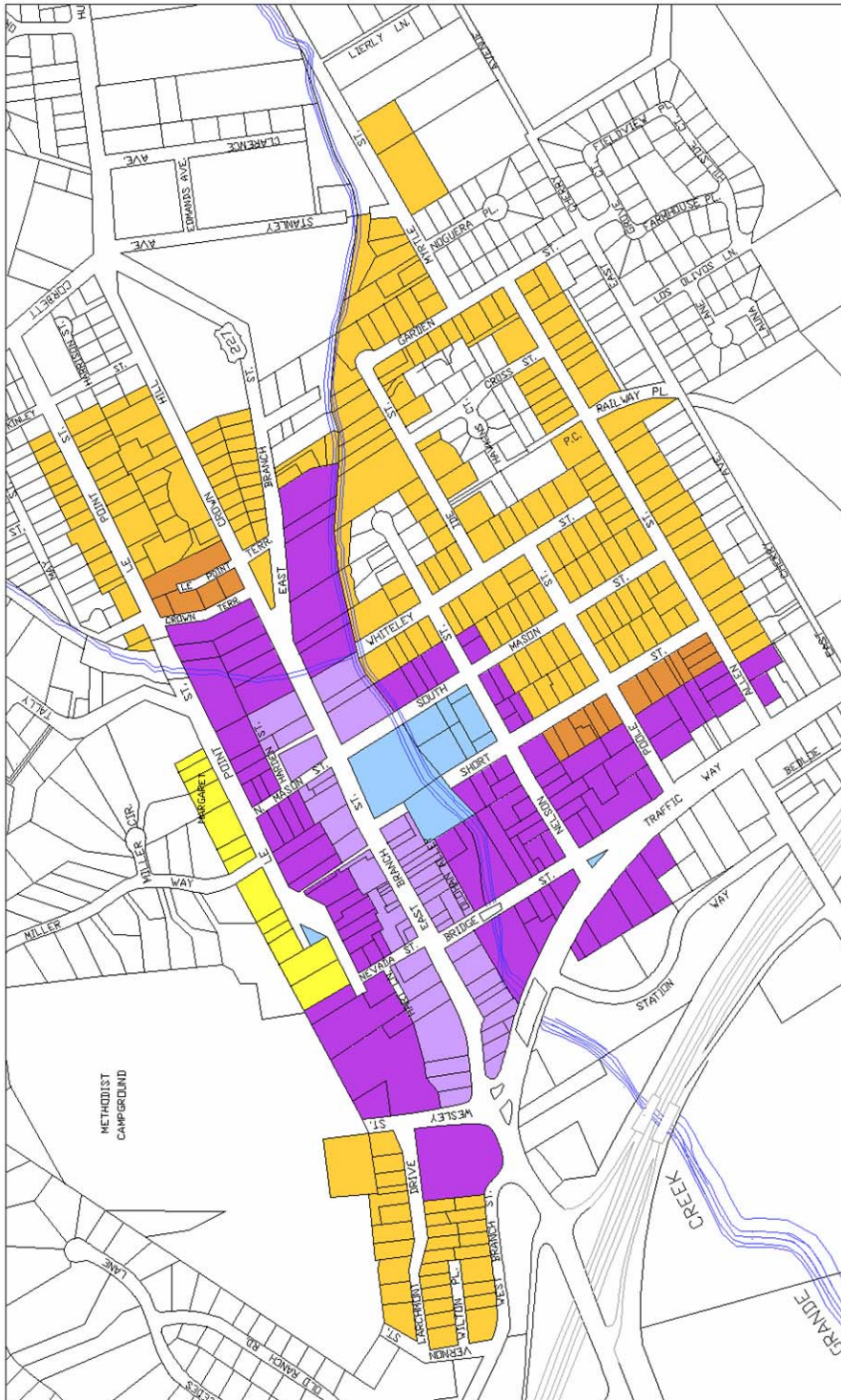
Materials 37

Colors 37

Sign Illumination..... 38

AWNINGS AND CANOPIES 38
REAR ENTRIES 38
PUBLIC AREA IMPROVEMENTS 39
 Sidewalks 39
 Signs 40
 Street Furniture 40
 Public Art 40
DEFINITIONS..... 41
ARCHITECTURAL TERMS 42
REFERENCES 43
APPENDIX A 45

DESIGN OVERLAY DISTRICT MAP FOR HISTORIC DISTRICTS



- Village MF-Medium (VNF-M)
- Village Community Facility (VCF)
- Village Downtown Core (VDC)
- Village Mixed Use (VMU)
- Village SF-Low (VSF-L)
- Village SF-Medium (VSF-M)

Design Overlay District 2.4 Map

Revised 11 Mar 2003

INTRODUCTION

CONCEPT OF THE GUIDELINES AND STANDARDS

The Guidelines and Standards are intended to help protect the historic buildings and character, architecture and sites that reflect the heritage of Arroyo Grande. It is intended that the Guidelines and Standards be consulted at early stages of any renovation or new development proposal to help create an overall approach to the design of the project.

Guidelines are statements that indicate preference or principles indicated by descriptive statements including “should”, “is encouraged”, “is desired” and “may”.

Standards are indicated by language that is unequivocal and that prescribe minimum acceptable limits. Statements such as “shall”, “is required” and “must” are standards.

The Guidelines and Standards are based on the concept that historic resources, like natural resources, are important to the human community and should be identified and protected. This is not an exercise in nostalgia, but is a methodical attempt to identify important resources from Arroyo Grande’s past and offer recommendations and policies that will help assure their preservation and enhancement.

The protection of historic districts, including homes, offices and businesses within the Village area of Arroyo Grande, will help preserve and enhance the unique qualities of the City for the enjoyment, pride, education and economic benefit of its citizens, businesses and visitors. These Guidelines and Standards are intended to preserve and enhance not only the most grand or impressive resources of the past, but the recognizable character composed of individual elements in the Village.

Developers of Arroyo Grande included merchants and farmers, entrepreneurs and employees. Most homes, offices and business establishments were modest in scale and utilitarian in function, and these structures are an important part of the fabric of the City.

Objectives

To help preserve and enhance historic resources, the following objectives are reflected in the Guidelines and Standards:

- Safeguard the heritage of Arroyo Grande.
- Encourage public knowledge, understanding and appreciation of the City’s past.
- Enhance the visual character of the City and the Village by preserving and promoting diverse and harmonious architectural styles and designs that reflect historic character and stages in the development of the City.
- Conserve valuable material and energy resources by continued use of the existing built environment.
- Protect property values and increase financial and economic benefits to the owners, businesses and residents of Arroyo Grande.
- Ensure that new construction and renovation of existing buildings are compatible with the historic character of the Village area and surrounding neighborhoods.

The Guidelines and Standards are intended to provide a variety of design choices and encourage creativity. They are not intended to dictate preconceived or uniform design solutions, but to assist design for building in the historic district and encourage the use of existing design elements. The intent is to

increase visual elements that buildings have in common, and stress a “sense of fit” for both new and renovated buildings. The Guidelines and Standards offer practical solutions beneficial for the community as a whole as well as for individual property owners within the Village area.

HOW THE GUIDELINES AND STANDARDS WERE DEVELOPED AND AMENDED

The Guidelines and Standards focus on both existing design issues in the Village historic districts and on issues that may be expected to arise in the future. Although much of the land in these districts has been developed, there is still substantial opportunity for infill development on vacant lots and partially developed properties. Additionally, some property owners may wish to restore, remodel or rehabilitate existing structures to prepare them for new uses. To address both current issues and potential future concerns, the Guidelines and Standards consider existing conditions, recognize past development patterns, and reflect future potential for growth and change.

The Guidelines and Standards are based on features of the existing built environment. These features were documented in the Historical Resource Survey, 1991, by the City of Arroyo Grande and Catherine Graves, showing existing historic structures in the Village historic district of Arroyo Grande (Appendix A). This survey recorded addresses, building types, ownership, and focused on architectural characteristics that contribute to the visual quality of the buildings and to the entire area surrounding them. These characteristics include height, roof configuration and material, exterior wall materials, window and door type, chimneys, and porches. Also documented were surrounding land uses and potential threats to the site or historic building.

The survey reveals that there is not one particular style that determines the overall character of the Village historic districts in

Arroyo Grande. There is, however, a common “vocabulary” of building elements that helps to create an impression of consistency and continuity. These elements are used frequently and in combination with different architectural styles.

These Guidelines and Standards were comprehensively updated by the Community Development Department in 2002-2003. The update process included six community workshops and several public hearings to facilitate public participation. The Guidelines and Standards were updated again in 2008 – 2009 to address large home size in residential districts located within the Historic Character Design Overlay District D-2.4.

For the purposes of these Guidelines and Standards, the historic period of the Village is 1870-1939.

HOW TO USE THE GUIDELINES AND STANDARDS

The Guidelines and Standards have been prepared to aid City decision makers, private design professionals and property owners. As the design is developed further, the Guidelines and Standards can be used to determine which specific procedures have a bearing on the project. The Guidelines and Standards suggest characteristics for design of details and elements, such as signs, rear entrances, landscaping, height, building mass, construction materials and other components that compose the project’s relationship to its surroundings.

Exceptions to Guidelines

Exceptions to GUIDELINES in this document may be approved if both of the following findings are met:

1. The alternative design or materials do not detract from adjacent buildings or the historic character and diversity of the Village area.

2. The mass and scale of the project is appropriate to the location considering the history and diversity of the area and the concept of the Village area.

An example of an exception to a guideline may be for an internally illuminated sign. See *Sign Illumination* on page 35, which allows externally illuminated signs. Findings may be made approving a sign if the applicant demonstrates that the sign maintains a historic character with internal illumination.

Exceptions to Standards

Exceptions to STANDARDS in this document may be approved if all of the findings for Exceptions to Guidelines are met AND by obtaining a Minor Exception Permit, per Section 16.16.120 of the Development Code. The Minor Exception requires noticing property owners within 300 ft. of the project. The Community Development Director approves a Minor Exception with a recommendation from the ARC. If the project requires Planning Commission approval, the Minor Exception will be processed concurrently. A Minor Exception may be approved if all of the following findings are met:

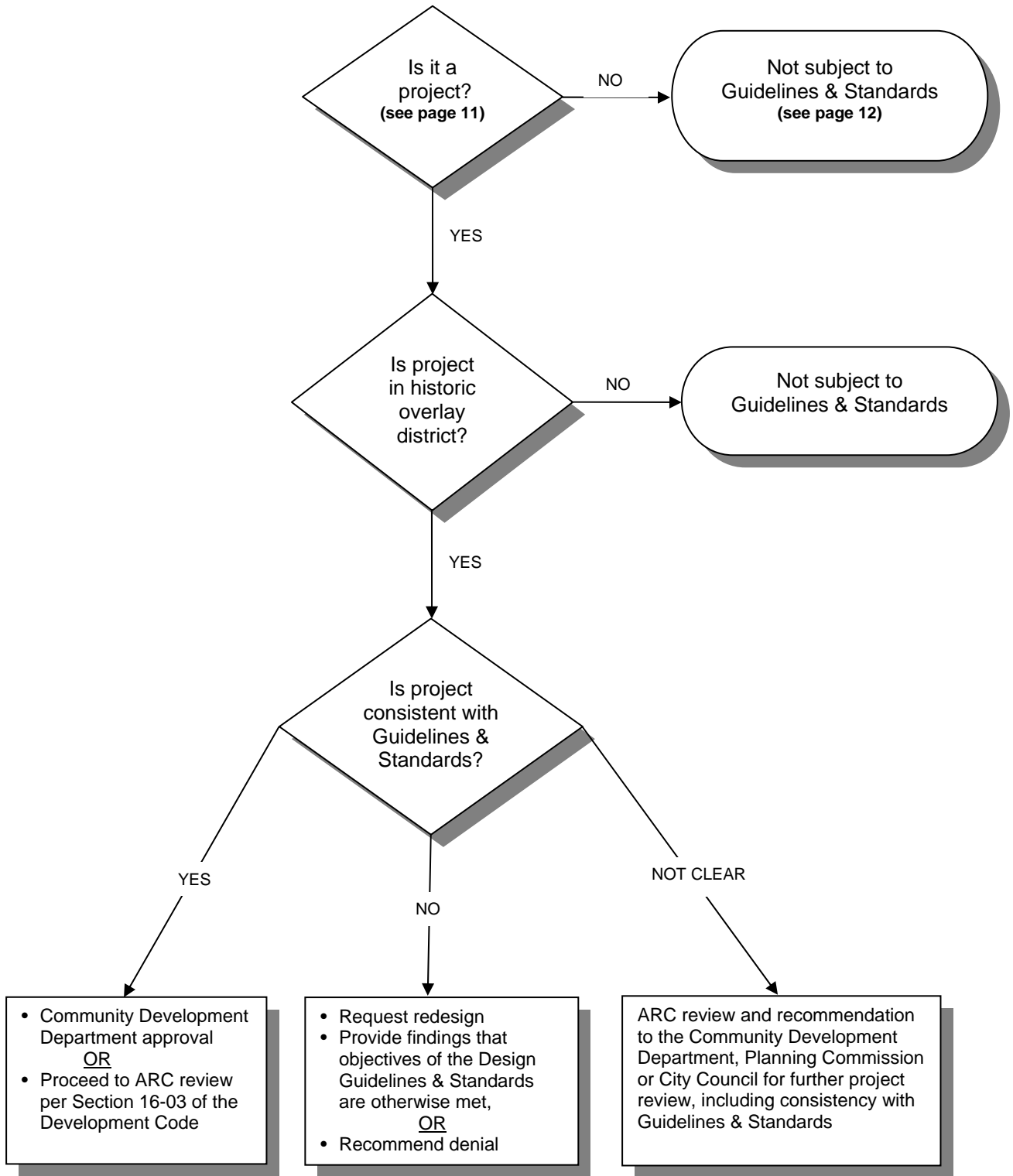
1. The strict or literal interpretation and endorsement of the specified regulation would result in practical difficulty or unnecessary physical hardship;
2. There are exceptional circumstances or conditions applicable to the property involved, or to the intended use of the property, that do not apply generally to other properties in the same district;
3. Strict or literal interpretation and enforcement of the specified regulation would deprive the applicant of privileges enjoyed by other property owners in the same district;

4. The granting of the minor exception will not constitute a grant of special privilege inconsistent with the limitations on other properties classified in the same district and will not be detrimental to the public health, safety or welfare, or materially injurious to properties or improvements in the vicinity;
5. The granting of a Minor Exception is consistent with the objectives and policies of the General Plan and the intent of this title.

The Guidelines and Standards are NOT intended to provide all necessary information for development projects within the Village area. The Guidelines and Standards only address generalized design issues. It is essential that other requirements in Title 16 (Development Code) and other portions of the Municipal Code (Development Code) be followed for each project. Nothing in the Guidelines and Standards is intended to supersede requirements of the Development Code. Questions regarding the relationship between the Guidelines and Standards and Development Code provisions should be referred to the Community Development Department.

An example of an exception to a standard may be for a sign with gold detailing that is a predominant shiny sign material. See *Sign Materials* on page 34, which does not allow high gloss, shiny or reflective surfaces as predominant sign material. If the applicant demonstrates that the sign maintains a historic character, then a Minor Exception may be processed concurrent with the sign application.

PROCESS FOR IMPLEMENTING GUIDELINES AND STANDARDS IN HISTORIC DISTRICTS



DESIGN REVIEW IN ARROYO GRANDE

Community Development Director

The Community Development Director is responsible for administering Title 16 Development Code, as described in section 16.08.090 of the City's Municipal Code. The Community Development Director processes all applications, conducts environmental reviews and approves minor use permits including permits such as viewshed reviews, design reviews and plot plan reviews.

Architectural Review Committee

The Architectural Review Committee (ARC) is a five member advisory committee appointed by the City Council to assist the Community Development Department, Planning Commission and the City Council by review of projects and comments regarding the aesthetics, site planning and architectural design of development proposals in the City. The ARC includes three members with technical design, planning, architectural and/or landscaping design knowledge and experience reading and interpreting site plans, architectural and engineering drawings as they relate to the appearance of proposed buildings, signage, structures and landscaping upon a site and the surrounding community. The two other members of the Committee may, but need not, have technical design and/or landscaping design knowledge and experience.

Planning Commission

The Planning Commission consists of five members appointed by the City Council. The Planning Commission makes recommendations to the City Council regarding the General Plan, growth management and development of the City, preservation and conservation of open space, the expenditure of public funds relating to the General Plan and many other mandatory responsibilities.

The Planning Commission has been assigned the responsibility to review and approve projects including the following:

- Conditional Use Permits
- Surface Mining Permits
- Variances
- Tentative Maps
- Vesting Tentative Maps
- Lot Line Adjustments
- Lot Mergers
- Reversions to Acreage
- Certificates of Compliance
- Notices of Violation
- Planned Sign Programs
- Viewshed Review Permits
- Planned Unit Development Permits
- Extensions of Time (for projects originally approved by Planning Commission)
- Architectural Review
- Appeals of Community Development Director Determinations

The Planning Commission also makes recommendations to the City Council on the following:

- General Plan Amendments
- Development Code Amendments
- Specific Plans and Amendments to Specific Plans
- Amendments to Zoning Districts
- Development Agreements
- Permits, Licenses or other entitlements within an approved Planned Development

City Council

The City Council reviews and approves the following:

- General Plan Amendments;
- Specific Plans and Amendments to Specific Plans;
- Amendments to Zoning Districts and other provisions of this title;
- Development Agreements;
- Appeals of Planning Commission determinations;

- Permits, licenses or approvals within an approved Planned Development;
- Extensions of Time (for projects originally approved by City Council);
- Concurrent applications.

REQUIRED APPLICATION SUBMITTAL DOCUMENTS AND MATERIALS

Applicants must submit adequate documentation in order for the City to properly evaluate and process applications. Drawings should be to scale and clearly depict the character of the proposed work. Submittal documents vary depending on what the project involves, however, the following documentation is generally required:

- Completed application form;
- Payment of fee established by the City Council to cover typical processing costs for the specific type of application (payable to the City of Arroyo Grande);
- Site photographs showing topography, vegetation, existing and adjacent structures, and views from the site;
- A scaled Site Plan drawing including a north arrow showing existing and proposed conditions including adjacent development patterns (the number of copies depends on the type of application submitted);
- Elevations showing all visible sides and the relationship of proposed building(s) to adjacent structure(s) and the types of exterior materials to be used;
- Samples of building materials showing actual colors, textures and types (*Computer printouts used as examples of colors and materials are not acceptable, actual material samples must be provided*);

- A model of proposed commercial or mixed use buildings;
- Any available or required historic information relating to the project;
- Demolition plans, if applicable; and
- Any other data requested or required by the Community Development Department, Architectural Review Committee, Planning Commission or City Council, as needed.

The Community Development Department may require submittal of amended plans if substantial changes are required before final consideration for approval. Plans that do not show all the proposed changes or materials may delay the project until the applicable information is provided.

PROJECTS SUBJECT TO THE GUIDELINES AND STANDARDS

The Design Guidelines and Standards for Historic Districts are incorporated by reference in the Development Code (Section 16.08.010(1)). All parcels within a Historic Design Overlay district are subject to the Development Code and these Guidelines and Standards.

As shown on the Design Overlay District Map, these Guidelines and Standards apply to all commercial, mixed use and residential construction and renovation projects within the Village Core Downtown (D-2.4) Single Family Low-Medium Density (D-2.4), Single-Family Medium Density (D-2.4), Multi-Family Medium-High Density (D-2.4), Mixed Use and Community Facility (D-2.4) zoning districts, as shown on the official zoning map.

Design Overlay District 2.11, remains subject to the Design Guidelines for Historic Districts (1994), until such time as a separate set of Guidelines and Standards

pertaining to the Traffic Way Corridor is adopted.

Demolition or Relocation Permit

Request for Demolition or Relocation Permits within the Historic Overlay Districts shall be subject to prior review by the Community Development Director for compliance with the California Environmental Quality Act (CEQA) and to determine if renovation would be possible and preferable. Prior to issuance of permit for the demolition or relocation of any building, notices shall be given to the ARC and the Planning Commission. This does not apply to demolition determined by the building official to be necessary to protect public health or safety.

Plot Plan Review

New construction or exterior alterations, additions or modifications of any building or structure in the *Village Residential*, *Village Core Downtown* and *Village Mixed Use* districts may require Plot Plan review by the Community Development Director before a building permit is issued.

The applicant shall include complete site plans, elevation details and specifications, a plot plan, and other information that is needed to describe their project and are required by the Community Development Director.

PROJECTS NOT SUBJECT TO THE GUIDELINES AND STANDARDS

- Residential or commercial projects that consist only of routine maintenance, or repair that do not involve a change of design or exterior material, and does not significantly change the outward appearance of the structure.
- Projects where less than 15% of the façade is physically changed and where a significant feature of a historic structure is not impaired.

- Construction, alteration or removal of any feature that has been determined by the building official to be necessary to protect health or safety.
- Projects that include the renovation or non-structural alteration of interior spaces only, and will not result in an alteration of the outward appearance of the structure.
- Demolition of any structure found by the Building Official to be necessary to protect health or safety of the public is exempt. Replacement of any demolished structure will be subject to all provisions of the Guidelines and Standards, and all applicable City codes and ordinances.
- Repainting of a commercial or mixed use building is subject to review by the Community Development Director to determine if it involves a substantial color change and may be referred to the ARC for a recommendation. For example, a change from one earth tone to another earth tone is not considered a substantial change.

HISTORIC OVERVIEW

HISTORY OF ARROYO GRANDE

The history of the Arroyo Grande Valley is firmly rooted in the natural resources that abound in the area. The first known inhabitants of the area were the Obispeno Chumash, who established a territory that covered much of Central California, extending as much as 60 miles inland from the ocean. Evidence has been found locally that suggests their presence dates back at least 9,000 years. Over 1,200 archaeological sites have been discovered in the Arroyo Grande Valley. The abundance of food included seafood and fish from the tidal flats, abundant wildlife in the surrounding hills and lush natural vegetation.

The first Spanish explorer, Juan Cabrillo, arrived on the Central Coast of California in 1542, and his narrative describes many Chumash Villages and a large population of native residents.

Spanish residence in the area commenced in 1771, when the mission was established at San Luis Obispo de Toloso. The priests of the mission established a garden and "plantation" in the Arroyo Grande Valley in 1780, where they raised large quantities of corn, beans, potatoes and other crops to supply food for the mission. At that time, however, the Arroyo Grande Valley was not the wide expanse of fertile farmland it was later to become. The area, which was to be the City of Arroyo Grande, was one large "monte" covered with willows and brush.

The area remained under the control of the Spanish government until the Mexican revolution and independence in 1822, when California became a territory of Mexico.

To encourage settlement in the "California Territory" the Mexican Government granted large parcels of land to individuals wishing to settle in the area. Early landholders in the

Arroyo Grande area included William G. Dana, John Wilson, John Price, Francis Z. Branch, and Issac J. Sparks. Francis Branch had the most extensive holdings in the valley, including the Arroyo Grande and Santa Manuela grants, and a part of the Pismo grant. To help in clearing and settling the land, Francis Branch gave farmers the use, for five years, of every acre they would clear and cultivate.

The San Luis Obispo Board of Supervisors established the township of Arroyo Grande in 1862. In 1867, the town consisted of a schoolhouse, blacksmith shop, and stage stop on the line to Santa Barbara. By 1876 there were two hotels, two stores, two saloons, a wheelwright and blacksmith shop, a schoolhouse, post office, livery stable and several residences. An influx of new settlers arrived in 1877, drawn by the rich fertile soil and mild climate that encouraged agricultural pursuits.

Transportation improvements contributed substantially to the success of agriculture in the valley. The Meherin brothers, who were local merchants, and other investors wishing to promote the Arroyo Grande Valley, built the Pismo Wharf in 1881. Stock was issued to finance the wharf, and 800 shares were sold at \$20.00 each to farmers and landowners. When finished, the wharf extended 1,600 feet from shore, where the water was 27 feet deep at low tide. In 1882, thirty-eight ships were loaded at the wharf, saving local farmers over \$35,000 in freight charges.

Also in 1881, the Pacific Coast Railroad was extended from San Luis Obispo to Arroyo Grande, further stimulating the agriculture industry and encouraging substantial growth and development.

Arroyo Grande was incorporated as a City in 1911, at which time the population was approximately 1,200. The reputation of the area continued to lure residents, and agricultural enterprises gave way to residential development. Eventually, the

small separate settlements of Arroyo Grande, Pismo Beach, Shell Beach, Grover Beach and Oceano expanded to reach each other's borders, creating a large urbanized area, sometimes called Five Cities, which is far different from what early settlers experienced.

Much remains in Arroyo Grande that reflects its heritage and past, however. Many older homes and buildings that remain reflect their utilitarian heritage, with vernacular architecture common. Some agricultural operations remain within the city, many of these in proximity to the Village area. The Village of Arroyo Grande still reflects many aspects of its history today, although most residents are no longer involved in the historic enterprise of agriculture.

OVERALL DESIGN FRAMEWORK

Design issues in the Village area are not limited to individual buildings or projects. While the community structure may not be of concern to an individual renovation project, it should be considered for larger projects that have the capacity to change the structure of the Village. The structure of the Village is an expression of the type, intensity and arrangement of activities and physical structures in the community. How the resident or visitor experiences the structure, depends on the clarity of the community's physical organization.

Are there landmarks for points of reference and recognizable "meeting spots?" Are travel routes clear and continuous and are separate areas recognizable for their individual character? These issues, and others, help to define the community's structure.

To help illustrate the structure of the Village of Arroyo Grande, and its problems and potential, visual elements, first described by author Kevin Lynch, can be used to explain the existing "image" of the Village area. These elements are defined and examples supplied to illustrate how they are expressed in the Village of Arroyo Grande. Designers and decision makers should consider these elements, and determine how they will be affected by development projects.

GATEWAYS

There are visual "clues" that tell an observer that they have entered the Village. They are a change in the quality of space on a path, where adjoining areas are distinguished from the distinct and separate Village area that the traveler is entering. Gateways can be natural or man-made, and can range from the first views of historic residences when approaching from Branch Mill Road or East Branch Street to the triangle park at the

intersection of Nelson Street and Traffic Way. Preservation and enhancement of gateways is important to help define the special quality of the Village area. The change of character, as one enters the Village on East Branch near Crown Hill, Mason Street or Traffic Way are "gateways".

LANDMARKS

There are features in the community that stand out because of their unique visual character. They are often used as reference points, to help guide a traveler through the Village. Landmarks are notable for the physical characteristics that separate them from their surroundings, and often, for their contribution to the historic fabric of the community. Landmarks in the Arroyo Grande Village include natural features such as Crown Hill and Arroyo Grande Creek to historic structures such as the old Methodist Episcopal Church, the I.O.O.F. Hall, the Olohan Building, and the Swinging Bridge. Care should be taken in the design of new projects to preserve the effect of existing landmarks, and to assure that new "landmarks" created are harmonious with their surroundings. A design element can unintentionally become an unwelcome landmark if its style, bulk, or color overwhelms the surrounding development or obscures an existing "landmark".

NODES

There are strategic spots in the Village that an observer considers the center or concentration of activity or junction of paths. The public parking area next to the creek, with the gazebo and Swinging Bridge or Village Green and historic museum area are illustrations of such a concentration of activity, especially during community festivals and farmer's market days. New development designs that incorporate pedestrian space and visual interest to attract activity can create such "nodes".

DISTRICTS

There are areas of the community with a unique character that distinguishes them from the adjoining areas. An observer can identify certain districts from inside, and often from outside the district. The historic development of Arroyo Grande, and the activities that occur in different areas of the Village, contribute to its division into districts.

There are distinct differences between the historic commercial buildings of the Village Core Downtown area, and with the nearby Village Residential area. The Village Residential area, with many historic homes and large mature trees, differs from the surrounding, more modern, developments. Both new development and renovations should be sensitive to the architectural elements that contribute to neighborhood character and to distinctive “districts”.

PATHS

There are paths for various types of movement. It is not necessary for an observer to actually travel on the path for it to be a major visual image. This is especially true in Arroyo Grande, where major arterials pass through the Village (Highway 227) or did pass through in earlier times, Traffic Way.

Branch Street has been the “main” street in the Village, and still serves as a major link to Lopez Lake and adjoining areas. Traffic Way, Bridge, Nevada and Mason Streets are additional vehicle paths through the Village, as are Olohan Alley and LePoint Street. Smaller connections for circulation include Short Street, several walkways and historic routes such as Hart Lane or Creekside promenades.

Design elements, such as street furniture, signs, trees and lighting can all contribute to the “importance” or purpose that is assigned to a particular “path”.

EDGES OR SEAMS

There are linear elements that are not paths that represent breaks in continuity that may be perceived as barriers between districts or “seams” where districts are joined. They may have a feeling of an edge, as with the steep hills to the north of the Village along LePoint Street, or a seam, like Arroyo Grande Creek, joined by bridges.

“Edges” or “seams” can be less defined but still apparent such as at Crown Terrace east of The Village or Traffic Way on the west.

NATURAL AREAS

There are areas within the Village that remain “natural” as opposed to built areas, man-made parks, plazas or gardens. In urban areas, the preservation of natural areas is often a challenge. Protection of large, landmark trees and the riparian areas adjoining Arroyo Grande Creek contribute substantially to the overall experience and enjoyment of the Village. Every effort should be made to preserve and enhance “natural areas”.

ARCHITECTURAL STYLES

This section illustrates various architectural styles found within the Village Historic Design Overlay District. These styles represent much of the existing architecture in the Village and shall be used as a guide for future development and renovations in the area. For the Spanish Eclectic Style, use this section as a guide for residential remodels for existing Spanish Eclectic style homes or mixed use/commercial construction (See Appendix "A" for additional examples); construction of new Spanish Eclectic homes is allowed in the HCO residential district subject to conditional use permit approval.

Most of the historic architecture does not follow one specific style, but is influenced by many. The commercial style development in the Village area is an eclectic mix of buildings, but there is a similar vocabulary in the building design and construction materials. The development for the residential and commercial buildings generally fits within one or more of the following architectural styles.

RESIDENTIAL STRUCTURES

Bungalow



The Bungalow style is a unique house type that borrows from other cultures, but is a truly American design. Developed on the west coast, the Bungalow reduces the distinction between inside and outside space, reflecting the open practical living possible in California. It is generally a low, small house that used natural materials and relied

on simplified design. The roof structure is most often broad gables, often with a separate lower gable covering the porch, although hipped roof structures are also common. There is little ornamentation, and what is found is of simplified design. The first Bungalow development period was from 1895 to 1915.

Cottage



A Cottage is basically a small frame single-family home that does not use any particular architectural style or ornamentation pattern. Roof styles vary, but most often use gable, hip or a combination of the two. This is a style that often borrows elements from classic styles, but does not incorporate other elements that make the style unique.

Craftsman



An extension of the early Bungalow, the Craftsman design included a low-pitched gabled roof with a wide, unenclosed eave overhang. Roof rafters are usually exposed and decorative beams or braces are commonly added under gables. Porches are either full or partial-width, with a roof often supported by tapered square columns. The most distinctive features of this style are the junctions where the roof joins the wall,

where the most ornamentation occurs. This was the dominant style for smaller homes from 1905 to early 1920's. The popularity of the style faded quickly, however, and few were built after 1930.

Folk Victorian



The Folk Victorian style uses a simple, folk type house style that is often one story and has a roof that is gabled or hipped (pyramidal). It lacks the intricate, irregular roof structure of the Queen Anne style, but includes ornamentation common to Victorian-style detailing, especially spindle work. Facades are generally symmetrical.

Queen Anne

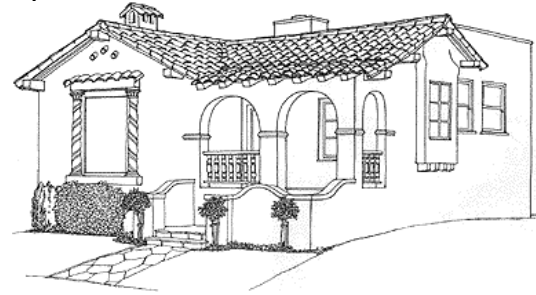


The Queen Anne architectural style was common from about 1880 to 1910. Identifying features include a steeply pitched, irregular shaped roof, often with a

dominant front-facing gable, patterned shingles, cutaway bay windows, and other features to avoid a smooth walled appearance. The decorative detailing is usually of two types:

1. Spindle work includes turned posts and may also include decorative gables and ornamentation under the wall overhangs.
2. Free classic detailing uses classical columns, instead of delicate turned posts, and other ornamentation is less "lacy" and delicate than that found in spindle work. This style became common after 1890.

Spanish Eclectic



For the Spanish Eclectic Style, use this section as a guide for residential remodels for existing Spanish Eclectic style homes or mixed use/commercial construction (See Appendix "A" for additional examples): construction of new Spanish Eclectic homes is allowed in the HCO residential district subject to conditional use permit approval. The Spanish Eclectic style uses decorative details borrowed from all aspects of Spanish Architecture. The roof is low pitched, usually with little or no eave overhang, or flat. The roof covering is S-shaped or 2-piece unglazed clay tile. Typically one or more prominent arches are placed above the door or principal windows. Windows are typically recessed. The wall surface is usually smooth plaster, and the façade is normally asymmetrical.

* Sketches from the Architectural Styles section are from Realty Advocates at www.realtyadvocates.com.

COMMERCIAL STRUCTURES

Late Nineteenth Century Commercial



Characteristics included in late nineteenth century commercial architecture are double storefronts that are generally 25 to 50 feet wide with one or two entrances. Flat roofs and rooflines with detailed cornices, recessed entrances flanked by large display windows on the first floors and smaller vertical rectangular windows on the second floors are common as well. Materials of the time the historic commercial buildings in Arroyo Grande were built include stone, brick and wood.

Future renovations and development within the Village Core shall use similar materials and color to fit within the historic character of the Village.

Olohan Building



IOOF Building



Old Brisco Hotel



CONSTRUCTION MATERIALS

This section provides examples of the most commonly found building materials used in the Village area of Arroyo Grande. There are also examples of construction materials under the Village Core and the Residential sections specific to those areas.

All new projects shall use materials that fit within the character of the Village (see following examples). Using similar materials or replicating these materials on all projects and restorations will extend the existing character extended throughout the Village.

All restorations shall use materials that match or complement the original structure facilitating compatibility and preservation of its character.

WEATHERBOARD OR CLAPBOARD WOOD SIDING

Most of the original housing and a few of the commercial buildings used horizontal wood siding or vertical board and batten for the exterior walls and trim of the buildings. Wood siding gives the buildings a sense of historic character, adding detail and texture.



CEMENT PLASTER

Cement plaster (including stucco) is not as common as wood or brick, however some of the commercial and residential buildings within the Village have plaster exteriors. Cement plaster buildings require detailing that gives them a historic “Village” feel. Buildings with plain plaster walls and no ornamentation are not appropriate for The Village.



YELLOW INDIGENOUS SANDSTONE

This type of stone is used on the old I.O.O.F. Hall on Bridge Street and the Old Brisco Hotel on East Branch Street. It is a golden stone that is shaped in large irregular chunks. The color of this natural stone adds a warm variety and individuality to the area.





BRICK AND STONE BLOCK

Brick and stone blocks are most common on commercial buildings in the Village. Brick is an old construction material that was used in the late 1800s and early 1900s when the bulk of the historic commercial buildings in Arroyo Grande Village were built. The use of exposed plain concrete block is not permitted in the Historic Village Core District.



WINDOW SASHES AND DOOR FRAMES

Doors should be made of wood or a material that resembles an older style wooden door. For commercial areas, large industrial style glass doors and windows with metal frames are not appropriate. Doors with wood trim and windows with wood framing should be used. Aluminum and other frames that have a modern metal look are not appropriate for the Village.



VILLAGE RESIDENTIAL DISTRICTS (VRD)



This section of the Guidelines and Standards applies to all residential parcels in the Historic Design Overlay district including Single Family Low-Medium Density, Single Family Medium Density and Multi Family Medium-High Density districts.

EXISTING CHARACTER

Many homes in this district were built in the period from 1885 to 1920, and represent a wide variety of architectural styles. Building materials, styles and details differ considerably from home to home, but some common elements can be identified in many buildings. These include height, mass and scale, materials and attention to ornamentation.

Similarity in Height, Mass and Scale

Most homes are one or two stories high, with single story designs most common. Lots are generally smaller and narrower than those in more modern suburban developments, and the home fills much of the width of the lot. Since garages were not included in many of these early homes, the facade design dominates the structure and streetscape. Other homes have single, detached garages, often in the rear yard.

Similarity of Material

The most common exterior wall material is either weatherboard or clapboard wood siding. These materials contribute a strong horizontal element to the overall design. Other popular materials include stucco or plaster, and shingles of various designs are often seen as accent materials or ornamentation, especially on gable ends.

Yellow indigenous sandstone, which was often used as a commercial building material in the Village Core area, is uncommon for residential façades. It is used often, however, as a material for foundations or retaining walls. Brick and concrete block are also common foundation materials.

The most common roofing material is composition shingle, and some wood shingles are also used. New roofing materials should incorporate composition shingles or other non-flammable material that approximates the appearance of wood.

For Spanish Eclectic or Pueblo styles, use of mission tiles is appropriate.

Window frames are almost exclusively wood, and door materials incorporate wood panels with glass, in varying proportions. Some homes have been remodeled and now incorporate non-traditional materials such as synthetic siding, concrete block or stucco walls and aluminum windows. The use of these materials is discouraged unless their appearance simulates traditional materials.

Sense of Experimentation

There are many similar types of building design, and some homes actually appear to be copies of others in the district. Design features and ornamentation are often used in creative ways, however, so that each home has an individual character. Often, elements from classic design types are combined, and the result is an unusual home.

Variety in Building Form

Although most of the homes are single story, tall two-story homes are also common. The combination of different architectural styles, varying setbacks, and distinct wing arrangements create a unique streetscape. Landscaping is used both to conceal and accent homes, and adds to the overall impression of the district.

DESIGN GUIDELINES AND STANDARDS

Site Design

1. All new projects or renovations shall adhere to site development standards of the Development Code.
2. All outbuildings, including garages, sheds, recycling enclosures, enclosures for service areas, trash containers, or outside storage should be compatible with materials, textures and colors of the principal building.

3. Existing trees should be retained as much as possible, although judicious pruning and shaping will be allowed. Drought resistant street trees shall be incorporated if pedestrian circulation will not be obstructed. All front yards shall be landscaped and maintained on a regular basis. Properly designed landscaping adds to the small town character of the residential area and is strongly encouraged.
4. Existing parkways shall be retained. New landscaped parkways shall be installed with substantial new construction. Continuous hardscape parkways are not permitted.

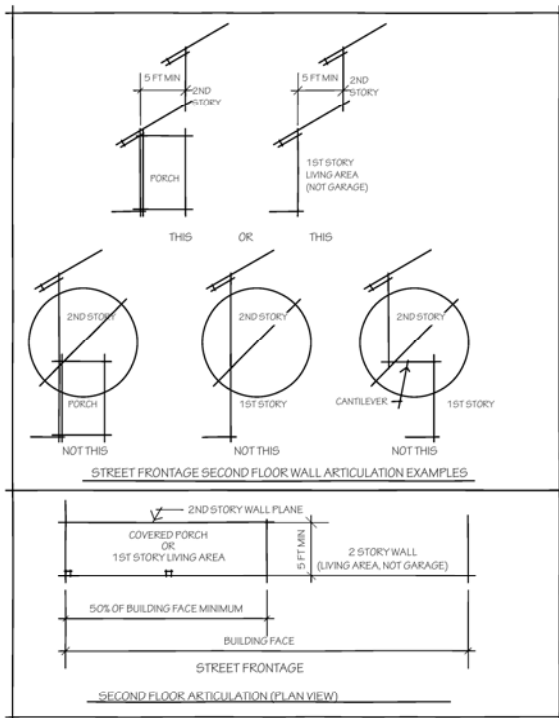
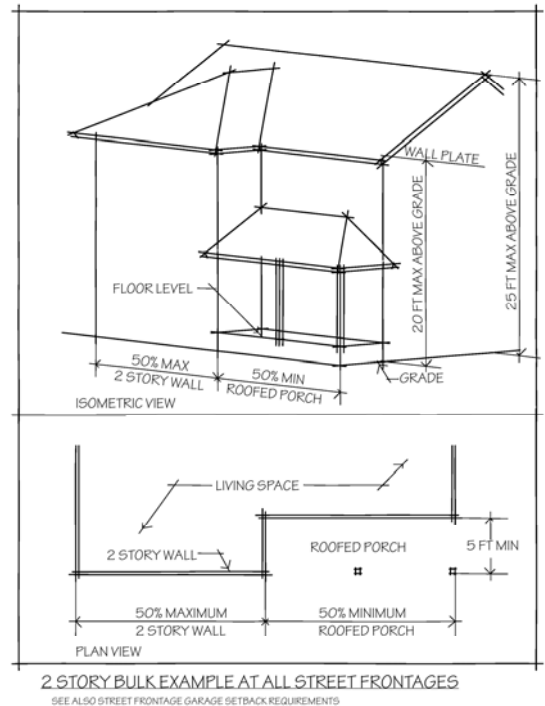


Building Design

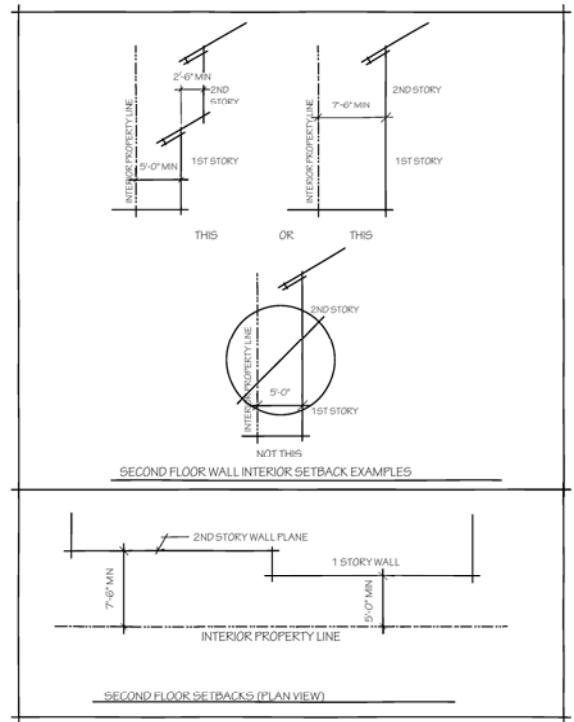
1. The height of new buildings shall not exceed 25 feet. Consistent with Development Code 16.16.100-B.4 and B.6, a Minor Exception may be sought to increase building height for Victorian architecture to improve architectural design where scenic views or solar access on surrounding properties is not affected. The maximum wall height shall be 20'.
2. The use of architectural styles in the years from 1870 through the 1930's is strongly encouraged (see Architectural Styles and Appendix "A" for examples). The Spanish Eclectic Style is allowed for residential remodels to existing Spanish Eclectic homes or mixed

use/commercial construction: construction of new Spanish Eclectic homes is allowed in the HCO residential districts subject to conditional use permit approval.

- To avoid “boxy” structures that have unrelieved exterior wall planes extending in height for two stories, and to promote vertical articulation of wall planes, the second floor living area shall be set back from the ground floor building footprint on the front and street sides of the house a minimum of 5 feet unless at least 50% of the first floor elevation is articulated with a covered porch extending out from the wall plane. The minimum interior sideyard setback for a two-story structure or the second story portion of the structure shall be 7.5’. Substantial articulation for two-story single-plane walls is strongly encouraged.



WALL ARTICULATION AT 2 STORY WALLS (ALL STREET FRONTAGES)
SEE ALSO STREET FRONTAGE GARAGE SETBACK REQUIREMENTS & 2 STORY BULK EXAMPLE

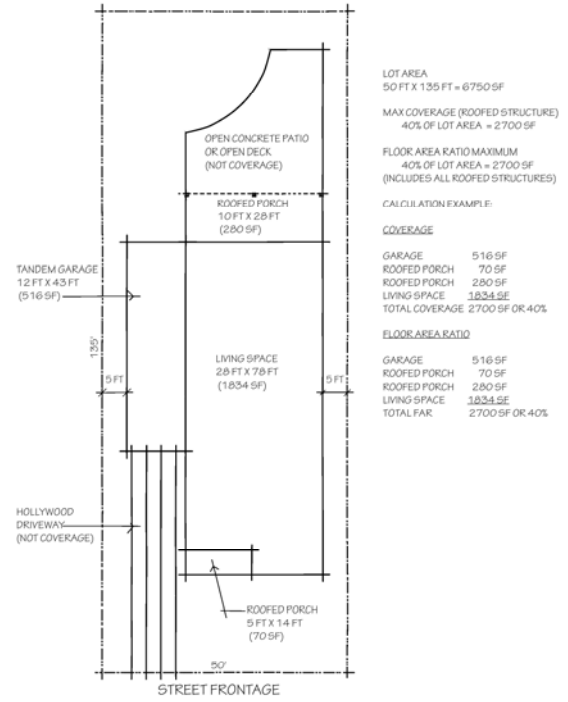


INTERIOR PROPERTY LINE SETBACKS AT 2 STORY WALLS
SEE ALSO STREET FRONTAGE GARAGE SETBACK REQUIREMENTS & 2 STORY BULK EXAMPLE

4. New buildings or renovations shall adhere to the following lot coverage and floor area ratio requirements displayed in Table 1:

Table 1 Lot Coverage and FAR

Parcel Size	Max. Lot Coverage	Maximum Floor Area Ratio (Gross Floor Area is inclusive of all roofed structures, including garage, loggias, balconies, decks, patios and porches; and excluding eaves, awnings and trellises)
0 – 11,999 square feet net	0.40	0.40
12,000 sq. ft. and larger	<u>0.40</u>	No FAR maximum Maximum residence size 4,800 sq. ft.



COVERAGE & FLOOR AREA RATIO EXAMPLE (SINGLE STORY)

LOT AREA
50 FT X 135 FT = 6750 SF

MAX COVERAGE (ROOFED STRUCTURE)
40% OF LOT AREA = 2700 SF

FLOOR AREA RATIO MAXIMUM
40% OF LOT AREA = 2700 SF
(INCLUDES ALL ROOFED STRUCTURES)

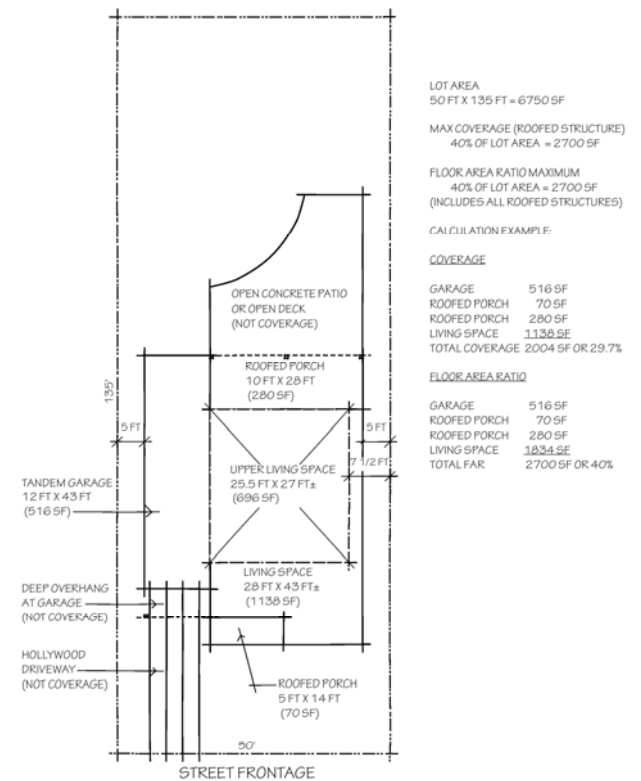
CALCULATION EXAMPLE:

COVERAGE

GARAGE 516 SF
ROOFED PORCH 70 SF
ROOFED PORCH 280 SF
LIVING SPACE 1834 SF
TOTAL COVERAGE 2700 SF OR 40%

FLOOR AREA RATIO

GARAGE 516 SF
ROOFED PORCH 70 SF
ROOFED PORCH 280 SF
LIVING SPACE 1834 SF
TOTAL FAR 2700 SF OR 40%



COVERAGE & FLOOR AREA RATIO EXAMPLE (TWO STORY)

LOT AREA
50 FT X 135 FT = 6750 SF

MAX COVERAGE (ROOFED STRUCTURE)
40% OF LOT AREA = 2700 SF

FLOOR AREA RATIO MAXIMUM
40% OF LOT AREA = 2700 SF
(INCLUDES ALL ROOFED STRUCTURES)

CALCULATION EXAMPLE:

COVERAGE

GARAGE 516 SF
ROOFED PORCH 70 SF
ROOFED PORCH 280 SF
LIVING SPACE 1138 SF
TOTAL COVERAGE 2004 SF OR 29.7%

FLOOR AREA RATIO

GARAGE 516 SF
ROOFED PORCH 70 SF
ROOFED PORCH 280 SF
LIVING SPACE 1834 SF
TOTAL FAR 2700 SF OR 40%

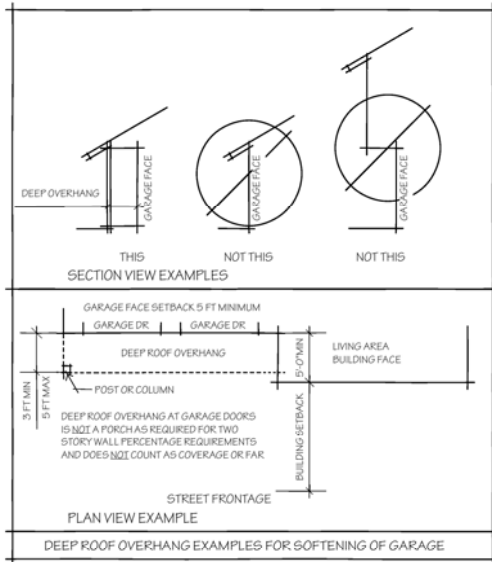
5. New construction shall include elements common to the district such as cladding type, roofing material, roof structure, and ornamentation. Spanish Eclectic design shall use clay tile roofing and shall comply with the description given on page 18. Cement plaster may be permitted in limited quantities provided that it emulates historic design and it does not detract from the historic character of the area.
6. To be consistent with the historic character in the Village, the following features should be used in all structures [and shall be used in conjunction with Minor Exceptions in accordance with Development Code Section 16.16.100-B(6)]: Incorporate architectural details and varied materials to reduce the apparent mass of structures. Such scale reducing design devices include porches, covered entries, dormer windows, oriel and bay windows, multi-pane windows, varying roof profiles, moldings, masonry, stone, brickwork, and wood siding materials. Expansive building facades should be broken up by varied roof lines, offsets, and building elements in order to avoid a box-like appearance. Variations in wall planes, rooflines, detailing, materials and siding should be utilized to create interest and promote a small-scale appearance. Minor Exceptions may also be considered for energy efficient building elements or design.
7. All new projects shall use materials that fit within the character of the Village. By using similar materials or replicating these materials on new projects and restorations, the existing historic character will be reinforced and extended.

Garage/Parking

1. One and two car garages shall be detached if feasible. If infeasible, proposed attached garages are preferred

to be side or rear-loaded or, if street facing, shall be recessed from the front building elevation a minimum of five feet with deep roof overhangs and smaller single bay doors. Tandem garages are encouraged to soften the façade of the home. Other similar architectural treatment to minimize the dominance of front garages is encouraged. The materials and architectural detailing of garage doors shall be consistent with the historic character of the Village and the architectural style of the house.. Prominent visibility of garage doors requires ARC approval. (Development Code Section 16.56.020 provides that a Minor Exception may be granted for the provision of on-site parking when a change or expansion in use is proposed.)





GARAGE FACE AND DOORS SHALL BE MINIMIZED USING BUILDING SETBACKS, DEEP OVERHANGS, DOOR MATERIALS, DOOR SIZES AND STYLES, DOOR ORIENTATION AND DOOR WIDTHS. SINGLE BAY DOORS ARE ENCOURAGED.

ALL GARAGE DOOR STYLES, COLORS AND PATTERNS SHALL BE PICTORIALLY AND DESCRIPTIVELY INDICATED ON ALL APPROVAL DRAWINGS.

GARAGE FACE & DOOR REQUIREMENTS (ALL STREET FRONTAGES)
SEE ALSO STREET FRONTAGE 2 STORY WALL PERCENTAGE REQUIREMENTS

Construction Materials

1. Clapboard or weatherboard cladding is the most common type of material used in the residential district. Plaster is prevalent in later designs, especially Spanish Eclectic styles. The use of clapboard or weatherboard is encouraged in new projects or renovations. Smooth plaster is acceptable for renovations involving styles such as Spanish Eclectic that are true to the description given on page 18.
2. Renovations shall use the original materials as much as possible.
3. Window sashes and doorframes should be made of wood or vinyl that looks like wood, and consistent with the historical period. Unfinished aluminum is not allowed.
4. Door materials were traditionally wood panel and glass. New or replacement doors shall be wood or an approved

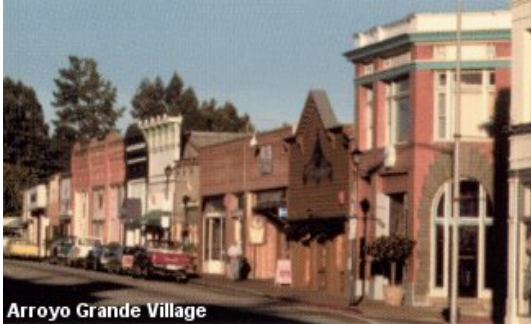
substitute material that simulates the appearance of original materials.

5. Original decorative details shall be retained during renovation. If the original materials have deteriorated and must be removed, they shall be replaced with materials that match the original in design, color, and texture.

Building Colors

1. Building colors shall fit within the existing character of the neighborhood and be compatible with the historic period of the Village Residential neighborhood. The use of fluorescent “neon”, “day-glo”, or bright primary colors as the predominant shade on building facades is not permitted. Colors for Spanish Eclectic designs should be muted and softer in tone.
2. When Plot Plan review is required, color samples shall be submitted as part of the process.

VILLAGE CORE DOWNTOWN (VCD)



Arroyo Grande Village

This section of the Guidelines and Standards applies to all parcels in the Village Core Downtown area and may also be applicable within Community Facilities (including Public Facilities and Parks), and Mixed Use districts as shown on the Design Overlay District Map.

An objective of the Village Core Downtown area is to enhance and maintain a compact, active street frontage with commercial uses that attract pedestrians. A visual continuity should be maintained through site design and compatibility of scale and materials.

MIXED USES WITHIN THE DISTRICT

There are properties within the Village Core, Mixed Use and Community Facilities overlay districts that have residential architectural styles, and are currently being used as stores, shops, residences, or offices. In order to preserve and enhance mixed use, the character of any new building or renovation shall be consistent with the surrounding area.

EXISTING CHARACTER

Many of the Downtown district historic commercial buildings were erected in the period from 1885 to 1910, and represent a variety of architectural styles. Although building material and detail differ, there are definite patterns that should be respected and incorporated into new development and

renovation. Common elements of design include façade height and structure, strong pedestrian orientation, and attention to ornamentation.



Similarity in Height, Mass and Scale

Most buildings are one or two stories high and range from about eighteen to thirty feet in height. The majority of the buildings in the Village on Branch Street between Traffic Way and Mason Street are also narrow as well, which emphasizes their vertical character.

The most common façade design is two stories high, although some buildings use a “false front” to achieve the impression of height. This façade treatment, when used on a relatively narrow building, stresses the strong vertical elements in the structure and creates an impressive image.

Buildings are also made to appear larger by creating a series of attached facades, linking several smaller structures to create the appearance of one large building. These techniques lead to a more impressive appearance without losing pedestrian scale or blocking views and light.



Similarity of Material

Brick and stone masonry construction is common, especially along Branch and Bridge Streets. Although some exteriors have been painted, such as the Olohan Building, the buildings retain many architectural details of “brick front” construction. This was one of the most popular storefront types of vernacular design, and incorporated commercial establishments on the ground floor with storage, offices or living quarters on the second level. An unusual vernacular style that uses locally quarried yellow stone is also found in the Village Downtown district. The unifying element is the stone itself, which calls for simplicity of construction and ornamentation, but the buildings using this material vary significantly in design. Another common material is wood siding, especially clapboard or weatherboard.

Sense of Experimentation

Although similar architectural styles are evident, and many elements are common, there is no one predominant architectural style, and elements are often combined in creative ways. The historic character, however, is maintained.

Pedestrian Orientation

Most commercial buildings have large display windows and a main entrance that faces the street, oriented to pedestrian traffic. There is no setback from the sidewalk, and buildings are generally designed and detailed to human scale, contributing to an atmosphere where pedestrians feel comfortable.

Variety in Building Form

There is sufficient variety in height, mass, scale and proportion to create visual interest in the Village Core Downtown Area. There is also a mixture of uses that includes retail

establishments, cafes, restaurants and offices, often within the same block.



DESIGN GUIDELINES AND STANDARDS

Mixed Use Projects Within the Village Core Downtown

Mixed use projects within the Village Core Downtown shall be predominantly commercial in character. Upper story residential and office uses designed to be compatible with ground floor retail uses are appropriate. Design of mixed use projects shall not impede pedestrian flow or disrupt concentration of retail, cultural and entertainment uses.

The following building elements shall **NEITHER** overpower the project or detract from the visual continuity of the streetscape or neighborhood **NOR** produce redundancy in feature or pattern that is discordant with the historic character of the district:

- Building scale
- Building form
- Building façade
- Building entrance
- Roofline
- Fencing, rails or trellis
- Archways, columns or towers
- Doors and windows
- Signage or feature designed for sign placement
- Colors

Site Design

1. All new projects or renovations shall adhere to the site development standards of the Development Code.
2. The existing front setbacks of zero to fifteen feet (0' to 15') shall be required with main entries facing the street. A majority of the building frontage shall face the street and incorporate design features oriented to the pedestrian.
3. Streetscape improvements shall complement the existing design sidewalk paving, lighting schemes and street furniture within the district.
4. All enclosures for service areas, trash or recycling containers shall be designed as part of the overall project or building. Materials, textures and colors should be consistent with those of the proposed project and compatible with adjacent buildings.
5. Landscaping shall retain existing trees and plants as much as possible. Street trees and sidewalk planters shall be incorporated where feasible and pedestrian circulation will not be obstructed. (Streetscape elements within the public right-of-way, require an Encroachment Permit from the Public Works Department.) Landscaping in parking areas shall conform to the requirements of Title 16 of the Municipal Code (Development Code).

Building Design

1. The height of new buildings shall not exceed development standards allowed in Title 16 of the Municipal Code. Scale and massing of any building within this area shall be consistent with that of the neighboring buildings, as described above in "Similarity in Height, Scale and Massing".

2. The existing pattern of building façades shall be incorporated into new development projects. Dominant façade designs incorporate either brick front elements or parapet features. Roof patterns generally associated with residential buildings such as gable, hip or gambrel are generally not appropriate for commercial building frontages in the Village Core Downtown District.
3. For retail commercial buildings, display windows should complement the design of surrounding historic buildings and shall be oriented to pedestrian traffic.
4. Transoms are common over display windows, and were used for light and ventilation. When possible, transoms should be incorporated into new building design, and existing transoms should be used in building renovations.
5. New construction should include elements such as cladding, roof structure and ornamentation common to the district. All new projects shall use materials – including roof materials – that fit within the character of the Village Core Downtown district. By using similar materials or replicating these materials on all projects and restorations, the existing character will be reinforced and extended.
6. Decorative fixtures, including awnings, signs, and lighting, shall be integrated with other design elements of the structures.

Construction Materials

1. Brick and stone masonry are the most common façade materials used on historic character structures in the Village Core Downtown district, and are acceptable façade materials. Some brickwork has been painted, and this is consistent with design style of the 1870-1939 period.

Other acceptable façade materials include yellow sandstone (such as that on the I.O.O.F. building), and wood cladding. Wood cladding shall be of painted clapboard, painted weatherboard, or board and batten styles.

Materials of similar design, color and texture may be considered. Smooth plywood panels are not appropriate unless detailed for the historic period.

2. Window sashes shall be of wood or painted steel, and consistent with the historic period. Materials that approximate the appearance of original materials may be substituted subject to the approval of the Architectural Review Committee, but unfinished aluminum is not allowed.
3. Door materials were traditionally wood panel and glass, either single or double. New or replacement doors shall be wood or an approved substitute material that approximates the appearance of original materials. Aluminum entry doors with large glass panels are inappropriate for the Village Core Downtown District.
4. Original decorative details should be retained during renovation. If the original materials have deteriorated and must be removed, they shall be replaced with materials that match as closely as possible the original in design, color, and texture.
5. Reflective glass is not appropriate in the Village Core Downtown District. Stained glass may be used as an accent material if it is consistent with the historic period of the building.

Building colors

1. The number of colors used on a building should be kept to a minimum.

2. While bright colors may be used for limited accent, their use is subject to review by the Architectural Review Committee (ARC).
3. Color samples shall be submitted as part of Plot Plan Review or Conditional Use Permit process.
4. The use of fluorescent, “neon” or “day-glo” colors on building facades is not appropriate, historic base colors should be used instead.
5. Accent colors used for ornamentation, awnings, dentils, friezes or other details shall harmonize with the predominant building color.
6. Color palettes shall complement the majority of the neighboring buildings and be consistent with the historic period.

Village Mixed Use (VMU)

This section of the Guidelines and Standards applies to areas between the Village Core Downtown and the Village Residential districts surrounding the Village, as shown on the Design Overlay map including the Public Facilities district. The Village Mixed Use district is intended to provide space for intensified mixed use projects compatible with adjoining commercial or residential districts. The Guidelines and Standards for this area are intended to enhance these transitional areas.

An objective of the Village Mixed Use district is to maintain and develop mixed uses in a manner that allows a transition from the intense commercial character of the Village Core Downtown to the surrounding traditional Village Residential neighborhoods. Adaptive re-use of existing houses is encouraged to accommodate new uses while maintaining the historical residential heritage. The Village Mixed Use district should enhance pedestrian accessibility and activity and minimize the visual impact of automobiles.

EXISTING CHARACTER



The Village Mixed Use districts contain a combination of commercial, office and residential uses rather than exclusively residential or commercial character evident in adjoining areas. Generally, the character of existing development reflects the period of the late 19th Century, however, it derives its diversity from the combination of residential and commercial uses over time.

Diversity in Scale

Many of the buildings surrounding the Village Core Downtown are small residential structures that are being used as homes, offices, or small retail stores. The lot sizes and building types are more consistent with Village Residential areas. Most of the buildings are one story, however, some two story homes and offices exist proximate to the Village Core Downtown. Generally, the scale of the Village Mixed Use neighborhood is smaller with moderate sized separated buildings.

Similarity of Material

Building materials used in the Village Mixed Use district generally reflect those used in Village Residential neighborhoods rather than Village Core Downtown commercial buildings. The most common cladding material is either weatherboard or clapboard wood siding. Other popular materials include stucco or plaster, and shingles of various designs are often seen as accent materials or ornamentation, especially on gable ends. The most common roofing material is composition shingle, and

to a lesser extent wood shingle. Yellow indigenous sandstone, which is a distinct building material in the Village Core Downtown, is not as common for Village Residential and Village Mixed Use buildings, but it is sometimes used as a foundation material or a trim material along with stone or brick. Window frames are almost exclusively wood, and door materials incorporate wood panels with glass, in varying proportions.

Sense of Experimentation

Most Village Mixed Use districts exhibit a Village Residential rather than Village Core Downtown commercial character. Use of similar building materials, colors, or styles with individual building design or unique ornamentation brings out a more eclectic nature within Village Mixed Use districts. Such diversity is encouraged.

Variety in Building Form



Buildings are single and two-story with varying architectural styles and sizes. Varying setbacks and distinct wing arrangements create a unique streetscape. Landscaping adds character by screening and accenting the buildings in the Village Mixed Use district. Variety in building form is due to historic mixed uses and diversity of individual infill developments between the Village Core Downtown and Village Residential areas over time. Materials and building styles incorporate details from both residential and commercial building types.

DESIGN GUIDELINES AND STANDARDS

The following building elements shall NEITHER overpower the project or detract from the visual continuity of the streetscape or neighborhood NOR produce redundancy in feature or pattern that is discordant with the historic character of the district:

- Building scale
- Building form
- Building façade
- Building entrance
- Roofline
- Fencing, rails or trellis
- Archways, columns or towers
- Doors and windows
- Signage or feature designed for sign placement
- Colors

Site Design

All new projects or substantial alterations and additions are required to adhere to site development standards of the Development Code.

Front Setbacks in the Village Mixed Use district should be in line with traditional houses along the block generally ten to twenty feet (10' –20'). Where setbacks vary, a new building shall fit within the range of setbacks of the block.

When a structure is built in or altered in or is facing a predominantly residential block, it should take on a residential design character regardless of its proposed use.

For a Village Mixed Use district project that is predominantly residential in use, the design of the project should reflect a residential character.

Residential and mixed use buildings in the Village Mixed Use district shall comply with the design standards for the Village Mixed Use district, unless otherwise approved by the ARC and Planning Commission. Exceptions may include retail commercial uses in close proximity to the Village Core Downtown.

Connective elements such as walkways, common landscaped areas, building orientation, and unfenced property lines are encouraged.

Particular care should be taken to assure convenient pedestrian and bike circulation through all parts of a project and to adjoining properties in the Village Mixed Use district.

Any surface parking should be provided in well-screened parking lots at the rear or sides of projects. Parking that is intended to support commercial or office uses should be placed in convenient proximity to such uses. At least one on-site parking space shall be provided for each dwelling unit, regardless of dwelling size.

New outbuildings, including garages and enclosures for service areas, trash or recycle containers, or storage structure should be compatible with materials, textures and colors of the principal buildings. Projects that propose potential newspaper racks shall include a designated area consistent with the building architecture. Vending machines in public view shall be placed within an enclosing structure. Plans for the structure shall be subject to ARC approval.

Existing trees should be retained where possible. A Tree Removal Permit may be required (Municipal Code 12.16). Judicious pruning and shaping will be allowed. Street trees and other sidewalk area landscaping shall be incorporated if pedestrian circulation will not be obstructed. (Streetscape improvements within the public right-of-way require an Encroachment Permit from the Public Works Department.) Front yards should be landscaped compatible with the majority of neighboring properties and maintained on a regular basis. Each residential unit shall provide a private outdoor patio, courtyard, atrium or balconies, regardless of unit size.

Street furniture and fixtures shall complement the existing sidewalk paving, lighting schemes, and street furniture within the Village Core Downtown.

A site plan incorporating the project within adjacent development shall be submitted as part of the application for Architectural Review.

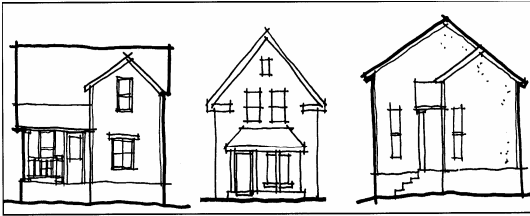
Building Design

The height of new buildings shall not exceed Development Code standards: generally one and two stories are allowed. New building additions and alterations should be compatible with the adjoining area and not exceed height, lot coverage and floor area ratio requirements of the Development Code.

The use of consistent architectural styles from the years 1870 to 1940 is strongly encouraged rather than additions or alterations from more recent or different design styles (see Architectural Styles for examples).

New construction should include elements such as cladding, roofing material, roof structure and ornamentation common to the district.

The existing pattern of building facades generally respecting pedestrian or human scale design should be incorporated into new development projects. Façade designs that incorporate either brick or stone elements and parapets are appropriate for commercial structures. Roof types generally associated with residential buildings such as gable, hip or gambrel are also appropriate for structures within the Village Mixed Use district.



Preferred: Design a façade to appear similar in scale and character to neighboring houses.

Established Context

Avoid: Large areas of blank wall that face the street appear more bulky and fail to provide a sense of human scale.

A building front should provide visual interest and a sense of human scale.

All decorative fixtures, including awnings, signs and lighting, shall be integrated with other design elements of the structures.

Building elevations shall be submitted as part of the application for ARC review. Perspectives, accurate sections or a model of the project may be required to depict the height, mass and scale of the proposed project with respect to its setting and adjacent development.

Construction Materials

Clapboard, weatherboard cladding, and cement plaster, including stucco, are building materials used in the Village Mixed Use district. Cement plaster is most prevalent in more recent designs and on Spanish Eclectic style buildings. All cladding or wood materials should be painted or treated to preserve the wood, and to give the structure a more finished look. New roofing materials should incorporate composition shingles or other nonflammable material that simulates the appearance of

wood. For Spanish Eclectic or Pueblo styles, the use of mission tiles is appropriate.

New or replacement door frames and window sashes should be made of wood or an approved substitute material that approximates the appearance of original materials.

Some existing buildings incorporate materials that do not reflect historic styles such as synthetic siding, concrete block and aluminum, which are the result of prior additions or remodels. Further use of these materials is not permitted unless necessary for minor changes to elevations already composed of such elements. Additions or alterations to buildings shall use the original building materials where possible, or approved materials that simulate original materials.

Original decorative details should be retained where possible. If original historic materials have deteriorated and must be removed, they shall be replaced with materials that match the original design, color and texture.

Sample materials shall be submitted as part of the application for ARC review.

Building Colors

Building colors should be compatible with the historic character of the area, and should not conflict with other colors in the surrounding areas. The building colors in the historic districts primarily include tones that match the natural environment such as earth tones. Some Victorian homes in the Village Residential and Village Mixed Use portions of the Village use brighter colors to accent the style of these buildings.

Neon or day-glow colors are not appropriate. Bright colors, such as those on the Victorian homes, shall be limited to accent details or portions of the buildings. Color samples shall be submitted as part of the application for ARC review.

Signs, Awnings and Rear Entries



SIGNS

General

1. Signs shall meet all requirements of the Development Code, and the provisions of these Guidelines and Standards for the district in which it is located. If a conflict arises between the Development Code and these Guidelines and Standards, the most restrictive requirements shall apply.
2. All signs, except Community Development Director approved window signs, shall be subject to review by the Architectural Review Committee (ARC).
3. Signs shall be oriented to pedestrians and slow moving vehicle traffic. This means that signs shall be smaller and on more of a human scale than signs in other commercial districts.



4. Painted wall signs are not appropriate on facades of unpainted brick or stone. Signs painted directly on unpainted or unfinished walls are not appropriate for the Village Core Downtown and Mixed Use districts. Wall signs painted on finished wood and/or painted brick, stone or stucco surfaces are allowed subject to ARC recommendation. Removing or altering painted signs can cause damage to the surface material.



Size

1. Signs shall not completely cover kick plates or window transoms.
2. All signage is included in the sign area allowed in the Development Code. This includes window and awning signs, logos and graphic representations that identify the business, product sold, or service offered.
3. Window signs shall not exceed twenty percent (20%) of the window area in which they appear.
4. Sign materials and lettering styles shall be consistent with the historic period.

Location

1. Signs shall be located in relation to the bays on the façade. Signs shall not

obscure architectural features of the building.



2. Wall signs shall be located near the entry to the building to better relate to pedestrian traffic.
3. Window and door signs shall be applied where they will not obstruct visibility.
4. Signs on awnings or canopies shall be placed where pedestrians can see them. Under-canopy signs are encouraged in the Village Core Downtown District to enhance pedestrian orientation, and shall be counted as part of the total allowable sign area.



Materials

1. Signs shall be built of wood, metal or other materials that simulate the appearance of wood or metal.
2. The use of wood-simulating recycled plastic material is subject to Architectural Review Committee (ARC) approval.
3. High gloss, shiny or reflective surfaces may be used as accents, but shall not be used as the predominant sign material.
4. Signs may use raised images or painted images in their design.
5. Sign materials shall complement the building material, and shall be in keeping with the historic character of the Village.
6. Signs painted on a signboard or other thin material shall be framed on all sides to provide depth and a finished look to the sign. Sign frames shall include carved or routed details or otherwise be designed to complement the architectural design of the building or district.
7. Interior lit and metal canister, plastic and vacuum-formed letters or sign faces are not permitted unless specifically recommended by the Architectural Review Committee (ARC).

Colors

1. Sign colors shall complement the building color scheme.
2. Bright, intense colors are inappropriate including the use of fluorescent, "neon" or "day-glo" colors on signs.
3. All applications for sign permits shall include a sample of the intended color palette.

Sign Illumination

1. Signs may be externally illuminated with incandescent lights, or other lighting that does not produce glare and is designed to conserve energy.
2. Wall, canopy, or projecting signs may be illuminated from concealed sources or exposed ornamental fixtures that complement the building's architecture.
3. Window signs and window displays may be illuminated from concealed sources.
4. Neon tubing signs that approximate the appearance of historic neon are subject to approval of the Architectural Review Committee. All neon tubing shall be covered with transparent or translucent material to prevent rupture or shall be certified by the manufacturer for safety.

AWNINGS AND CANOPIES



1. Under-awning or under-canopy signs oriented to pedestrian traffic are encouraged as part of the overall signage in the Village Core Downtown and Mixed Use districts.
2. All graphics, logos, and signs contained on awnings or canopies shall be considered part of the total allowed sign area as defined in the Development Code.

3. Awning or canopy color and design should be compatible with that of the building on which it is attached and complement those of adjacent buildings, both in style and color.



4. Canopies and awnings shall be consistent with the historic period in regard to size, shape, and materials. Aluminum, fiberglass and plastic awnings or canopies are not appropriate. The use of loose valances and traditional vintage-stripped awning material is encouraged. Canopies and awnings consisting of materials stretched taut over a rigid framework are not appropriate.

REAR ENTRIES



1. Rear entries are traditionally plain and unadorned. Common materials include brick, stone, boards and battens and wood siding, and these are acceptable for new construction or renovation.

Wood siding may be either painted or unfinished, subject to Architectural Review Committee approval.

2. Trim materials are commonly wood or steel. Materials that approximate the appearance of wood or steel are subject to review by the Architectural Review Committee. Wood trim may be either painted or unfinished.



3. Color schemes shall complement those used on the façade of the building. The use of bright, primary colors as the predominant shade is not appropriate. While bright colors may be used for limited accent, their use is subject to Architectural Review Committee approval. The use of fluorescent, “neon” or “day-glo” colors is not appropriate.
4. Signs used in conjunction with rear entrances shall be part of the total sign area allowed for the use under provisions of the Development Code.
5. Doors and windows, including double-hung sash and casement windows, are traditional for rear entrances and may be used if the frame is wood or a material that simulates wood. Rear entry doors need not include glass panels.

PUBLIC AREA IMPROVEMENTS



Sidewalks

1. Exposed aggregate sidewalks with brick, stone or tile bands are required along Branch Street from Traffic Way to Tally Ho Creek and on Bridge Street between Branch Street and Nelson Street, in the Downtown district. Other streets within the Village Core Downtown and Mixed Use districts may have exposed aggregate sidewalks or conventional concrete, as approved by the City.
2. New building and substantial renovation projects within the Downtown and Mixed Use districts shall include replacement of existing conventional sidewalk with exposed aggregate sidewalk where required. Building permits shall include construction of sidewalk in areas without sidewalk.

When sidewalks are replaced due to normal maintenance, the new sidewalks shall be exposed aggregate, where required.

Signs

1. All public signs shall be subject to a fee-exempt design review by the Architectural Review Committee. Public signs shall be detailed to conform to the area. This includes painting all new poles, sign backs, and other appurtenant hardware a color that is consistent with other public signs in the Village area.

Street Furniture

1. Street furniture shall be compatible and consistent with City approved street furniture. Variations shall be subject to approval of the Architectural Review Committee. Trash and recycling receptacles shall be clearly differentiated. Advertising on benches, shelters or furniture is inappropriate in the Village Downtown and Mixed Use districts.
2. Ornamental streetlights shall be required in the same areas as exposed aggregate sidewalks, and are encouraged in other public or private pedestrian or parking areas throughout the Downtown and Mixed Use districts.
3. Bike racks shall be located in parking lots, with smaller racks in high traffic areas near building entries or plaza areas. Bike racks shall be painted dark colors, similar to sign and light poles. Bike lockers, where proposed, shall be darker wood tone colors and shall not be located in areas where they could detract from the pedestrian character of the Downtown and Mixed Use districts.
4. New projects that propose potential newspaper racks shall include a

designated area designed consistent with the building architecture.

5. Vending machines in public view shall be placed within an enclosed structure. Plans for the enclosed structure shall be subject to Architectural Review Committee approval and consistent with the architecture of the principal adjoining building.

Public Art

1. Public Art shall be consistent with the City's Policy on Public Art, and in character with the historic period.

DEFINITIONS

Guideline: Advisory instructions for a future course of action.

Historic Period: For the purposes of these Historic District Guidelines, the historic period of the Village is 1870-1939.

Preservation: The treatment of an existing building to stop or slow deterioration, stabilize the structure and provide structural safety without changing or adversely affecting its original character or appearance.

Rehabilitation, Renovation: The process of returning a property to a state of utility, through repair or change, which makes possible an efficient contemporary use while preserving those parts and features of the property important to its historic, architectural, and cultural values.

Remodel: The change of original features of a building or structure.

Restoration: The careful return of a building to its original appearance or to a particular time period by removal of later work and replacement of missing earlier work.

Scale: The interrelation of the size of architectural spaces, masses, elements, construction units, with the size of the human figure.

Standard: Mandatory requirement of the Development Code or other City adopted regulation, plan or details (usually worded “shall” or “must”).

Sign (externally illuminated): A Sign that does not use an artificial light source behind its face to make the message readable.

ARCHITECTURAL TERMS

Bay: A rectangular area of a building defined by four adjacent columns; a part of a building that projects from a façade.

Cladding: A material used as the outside wall enclosure of a building.

Cornice: The exterior detail at the meeting of a wall and a roof overhang; a decorative molding at the intersection of a wall and a ceiling.

Dentil: Alternate square block and blank spaces on a cornice or portico that gives the appearance of teeth.

Eave: The horizontal edge at the low side of a sloping roof.

Façade: The exterior face of a building, often distinguished from other surfaces by elaboration of architectural features or ornamental details.

Kick plate: A wood panel or portion of wall below a large display-type window.

Parapet: The region of an exterior wall that projects above the level of the roof.

Sash: A frame for a pane of glass in a door or window.

Shingle: A small unit of water-resistant material nailed in overlapping fashion with many other units to make a wall or sloping roof watertight.

Transom: A window above a door or other window built on or hinged to a horizontal crossbar.

Vernacular: Of or being an indigenous building style using local materials and traditional methods of construction and ornament, especially as distinguished from academic or historical architectural styles.

REFERENCES

Angel, Myron, History of San Luis Obispo County, California. Berkeley, CA: Howell-North Books, 1966 (Reprint of Thompson & West, 1883)

Arroyo Grande, California, City of, Development Code. City of Arroyo Grande: Author, 1991

Arroyo Grande, California, City of, Existing Setting and Community Issues Report. City of Arroyo Grande and Planning Network: Authors, 1989.

Arroyo Grande, California, City of, General Plan, Land Use and Conservation Elements. City of Arroyo Grande and Planning Network: Authors, 1990.

Aurora, Colorado, City of, Design Guidelines. Department of Planning, Aurora Colorado: Author, 1984.

Cal Poly State University, Fourth Year Design Lab, Corralitos Community Plan. Santa Cruz County and Cal Poly: Authors, 1991.

Danville, California, City of, Historic Downtown Danville, Guidelines. City of Danville and David L. Gates and Associates: Authors 1994.

Danville, California, City of, Design Guidelines for Heritage Resources. City of Danville and Winter & Company: Authors 2001.

Doyle, Michael E., Color Drawing. New York: Van Nostrand Reinhold Co., 1981.

Garnham, Harry L., Maintaining the Spirit of Place. Mesa, AZ: PDA Publishers Corp., 1985.

Gilroy, California, City of, Downtown Gilroy Revitalization Action Plan. City of Gilroy: Author 1986.

Glendale, California, City of, Historic Preservation Element. City of Glendale Planning Division: Author, 1977.

Gottfried, Herbert and Jan Jennings, American Vernacular Design, 1870-1940. New York: Van Nostrand Reinhold Co., 1985.

InterWeavers. Realty Advocates. www.realtyadvocates.com. 1998

Jackson, Wyoming, City of, Design Guidelines. City of Jackson: Author, 1976.

Kirker, Harold, California's Architectural Frontier. San Marino, CA: Henry E. Huntington Library, 1960.

Lynch, Kevin, The Image of the City. Cambridge, MA: The M.I.T. Press, 1960.

Lynch, Kevin, Good City Form. Cambridge, MA: The M.I.T. Press 1981.

McAlester, Virginia and Lee, A Field Guide to American Houses. New York: Alfred A. Knopf, 1984.

Miner, Ralph W., Conservation of Historic and Cultural Resources. Chicago: American Society of Planning Officials, 1975.

Morrisson, Annie L., History of San Luis Obispo County and Environs. Los Angeles: Historic Record Co., 1917.

Nicholson, Loren, Rails Across the Ranchos. Fresno, CA: Valley Publishers, 1980.

Orange, California, City of, Historic Preservation Element. City of Orange: Author, 1985

Pacific Grove, City of, Architectural Review Guidelines for Single-Family Residences. City of Pacific Grove, Author, 1998.

Peterson, Richard A., Framework Design in Community Planning: Designing Cities Without Designing Buildings. 1989.

San Clemente, California, City of, Design Guidelines. City of San Clemente, Author, 1991.

San Jose, California, City of, Residential Design Guidelines. City of San Jose, Author, 1999.

San Luis Obispo, California, City Of, Completion Report: Historic Resources Survey, Volume 1. City of San Luis Obispo: Author, 1983.

San Luis Obispo, California, County Of, Design Guidelines Manual. County of San Luis Obispo: Author, 1998.

So, Frank S., The Practice of Local Government Planning. Washington DC: The International City Management Association, 1989.

Sunnyvale, California, City of, Heritage Preservation Sub-Element. City of Sunnyvale Department of Community Development: Author, 1980.

U.S. Department of the Interior, Guidelines for Local Surveys: A Basis for Preservation Planning. Washington, DC: National Park Service, 1983.

U.S. Department of the Interior, Standards for Rehabilitation and Guidelines for Rehabilitating Historic Buildings. Washington, DC: National Park Service, 1983.

Ziegler, Arthur P. And Walter C. Kidney, Historic Preservation in Small Towns. Nashville, TN: The American Association for State and Local History, 1980.

APPENDIX A

SPANISH ECLECTIC DESIGN

Good examples of existing Spanish Eclectic design in the Historic Character Overlay District in the Arroyo Grande Village:



SPANISH ECLECTIC DESIGN

Examples of modernized Spanish Eclectic/Mediterranean design from outside the City that are NOT good examples of design that is consistent with the Historic Character Overlay District in the Arroyo Grande Village:

