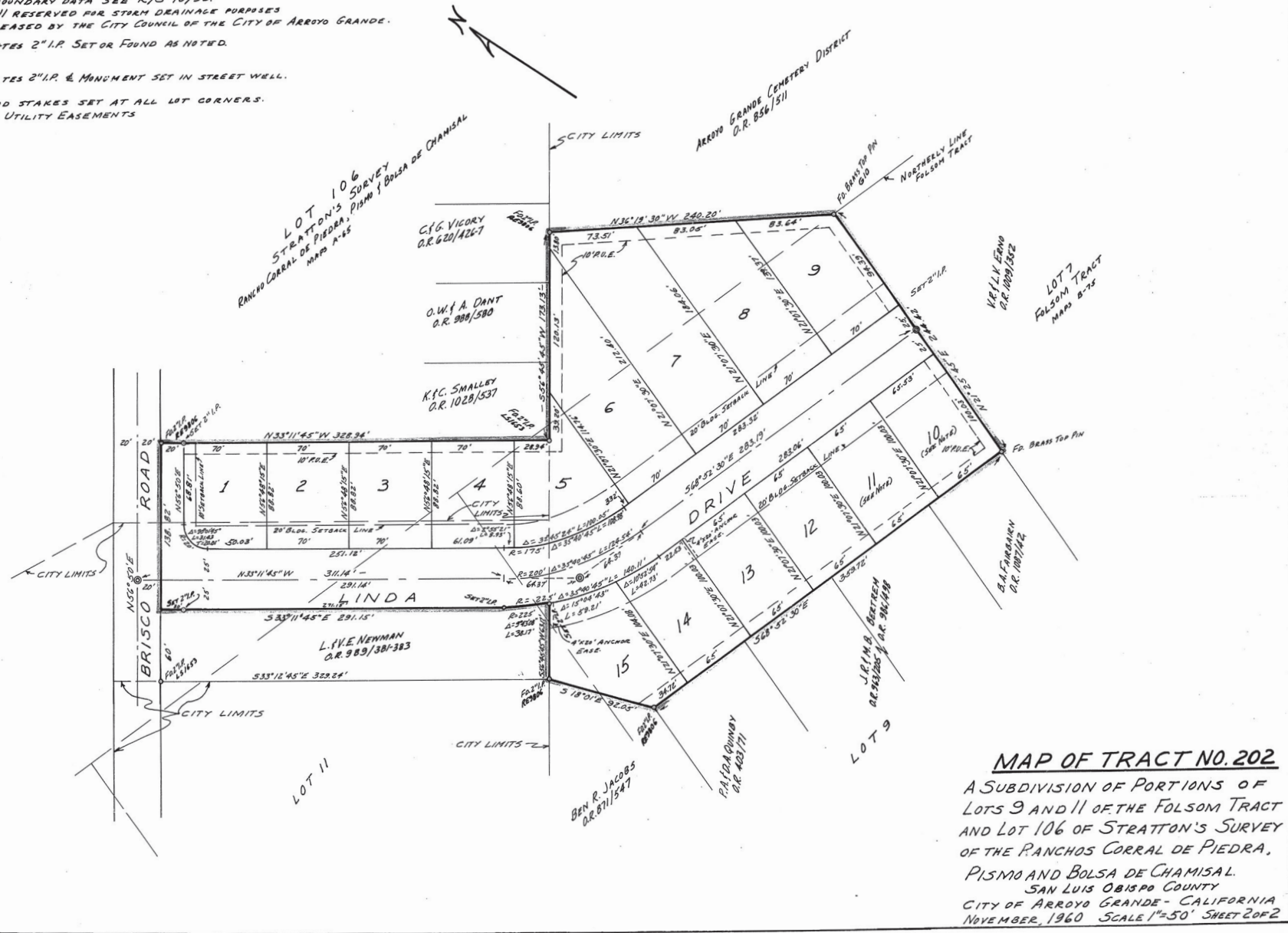


BASIS OF BEARINGS: BRISCO RD NOTED AS N56°50'E
 FOR RECORD BOUNDARY DATA SEE R/S 10/96.
 LOTS 10 AND 11 RESERVED FOR STORM DRAINAGE PURPOSES
 UNTIL RELEASED BY THE CITY COUNCIL OF THE CITY OF ARROYO GRANDE.

- INDICATES 2" I.P. SET OR FOUND AS NOTED.
- INDICATES 2" I.P. & MONUMENT SET IN STREET WELL.
- 2"x2" REDWOOD STAKES SET AT ALL LOT CORNERS.
- P.U.E. = PUBLIC UTILITY EASEMENTS



MAP OF TRACT NO. 202
 A SUBDIVISION OF PORTIONS OF
 LOTS 9 AND 11 OF THE FOLSOM TRACT
 AND LOT 106 OF STRATTON'S SURVEY
 OF THE RANCHOS CORRAL DE PIEDRA,
 PISMO AND BOLSA DE CHAMISAL.
 SAN LUIS OBISPO COUNTY
 CITY OF ARROYO GRANDE - CALIFORNIA
 NOVEMBER, 1960 SCALE 1"=50' SHEET 2 OF 2

1049
 Sub B