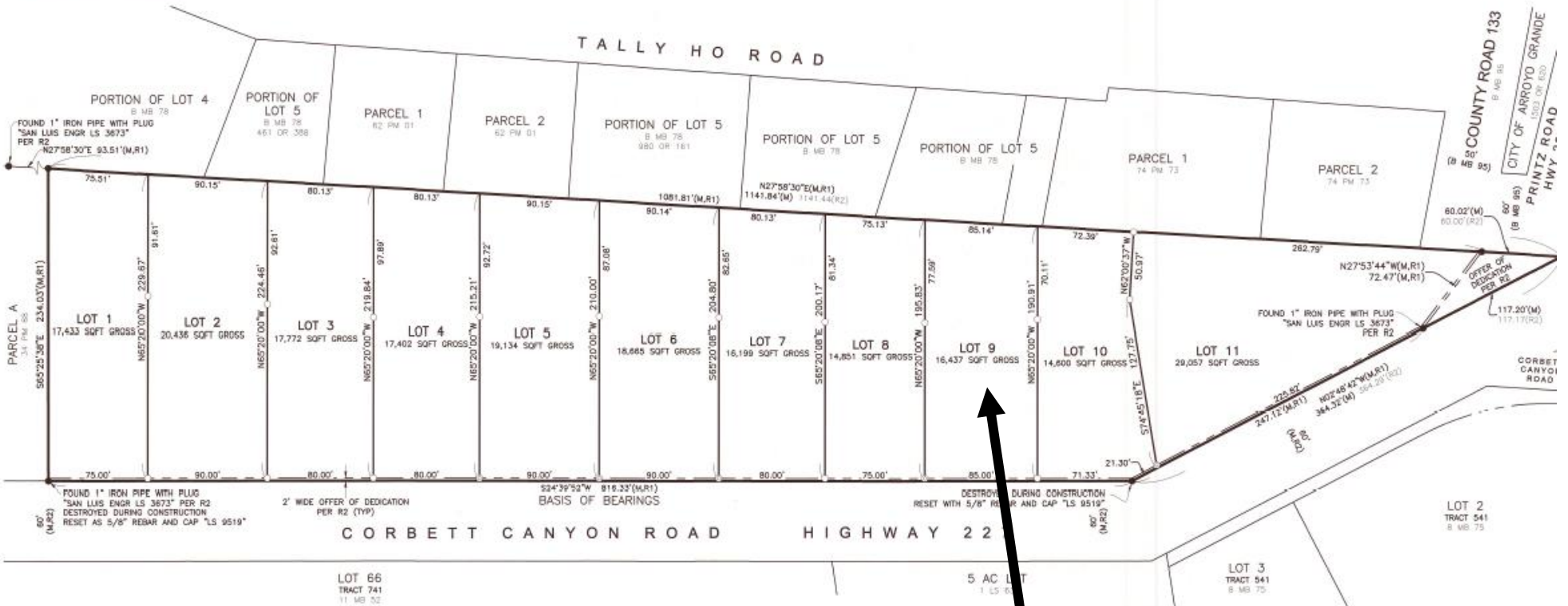


SURVEYOR'S NOTES

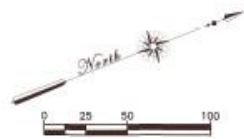
THE WESTERLY BOUNDARY OF TRACT 2985, ALSO BEING THE WESTERLY BOUNDARY OF THE OLD PCRR ROW, WAS ESTABLISHED FROM FOUND MONUMENTS ON THE WESTERLY LINE OF PARCELS B & C OF AG AL 83-089 (R2). UPON RETRACEMENT OF THE LINE IT WAS NOTED THAT SAID BOUNDARY HAS BEEN HISTORICALLY RE-ESTABLISHED BY TWO VARYING METHODS THAT HAS CREATED A DISCREPANCY IN THE LOCATION OF THE LINE. FOUND MONUMENTS ALONG THE PCRR ROW HAVE BEEN SHOWN FOR REFERENCE ONLY IN THE MONUMENT DETAIL SHOWN HEREON. THE SOUTHERLY BOUNDARY OF THE SUBDIVISION WAS ESTABLISHED FROM FOUND MONUMENTS ON THE SOUTHERLY LINE OF SAID PARCEL B. THE EASTERLY BOUNDARY OF THE SUBDIVISION WAS ESTABLISHED FROM FOUND MONUMENTS ON THE EASTERLY LINE OF SAID PARCELS B & C, ALSO BEING THE WESTERLY LINE OF HIGHWAY 227.

SET MONUMENTS ALONG HIGHWAY 227 ARE SET ALONG THE WEST LINE OF THE 2.0' WIDE OFFER OF DEDICATION PER R2. THE DISTANCES AND AREAS SHOWN HEREON ARE TO THE ORIGINAL RIGHT OF WAY OF HIGHWAY 227.

SET MONUMENTS ALONG THE LOT LINES ARE SET AT THE LIMITS OF THE PUBLIC CREEK EASEMENT AS WITNESS CORNERS WITH DISTANCES TO THE BACK PROPERTY CORNERS.



- LEGEND**
- FOUND 1" IRON PIPE WITH BRASS TAG "LS 4283" PER (R1), UNLESS OTHERWISE NOTED
 - SET 5/8" REBAR AND CAP "LS 9519", SEE SURVEYOR'S NOTES HEREON
 - ⊙ SET NAIL & TAG "LS 8519", SEE SURVEYOR'S NOTES HEREON
- R1 38 CR 43 CASSERA (2017)
 R2 34 PM 88 KINNEAVY (1984)



BOUNDARY SHEET
TRACT 2985
 A SUBDIVISION OF PARCELS B AND C OF PARCEL MAP AG AL 83-089,
 AS FILED IN BOOK 34 OF PARCEL MAPS AT PAGE 88.

