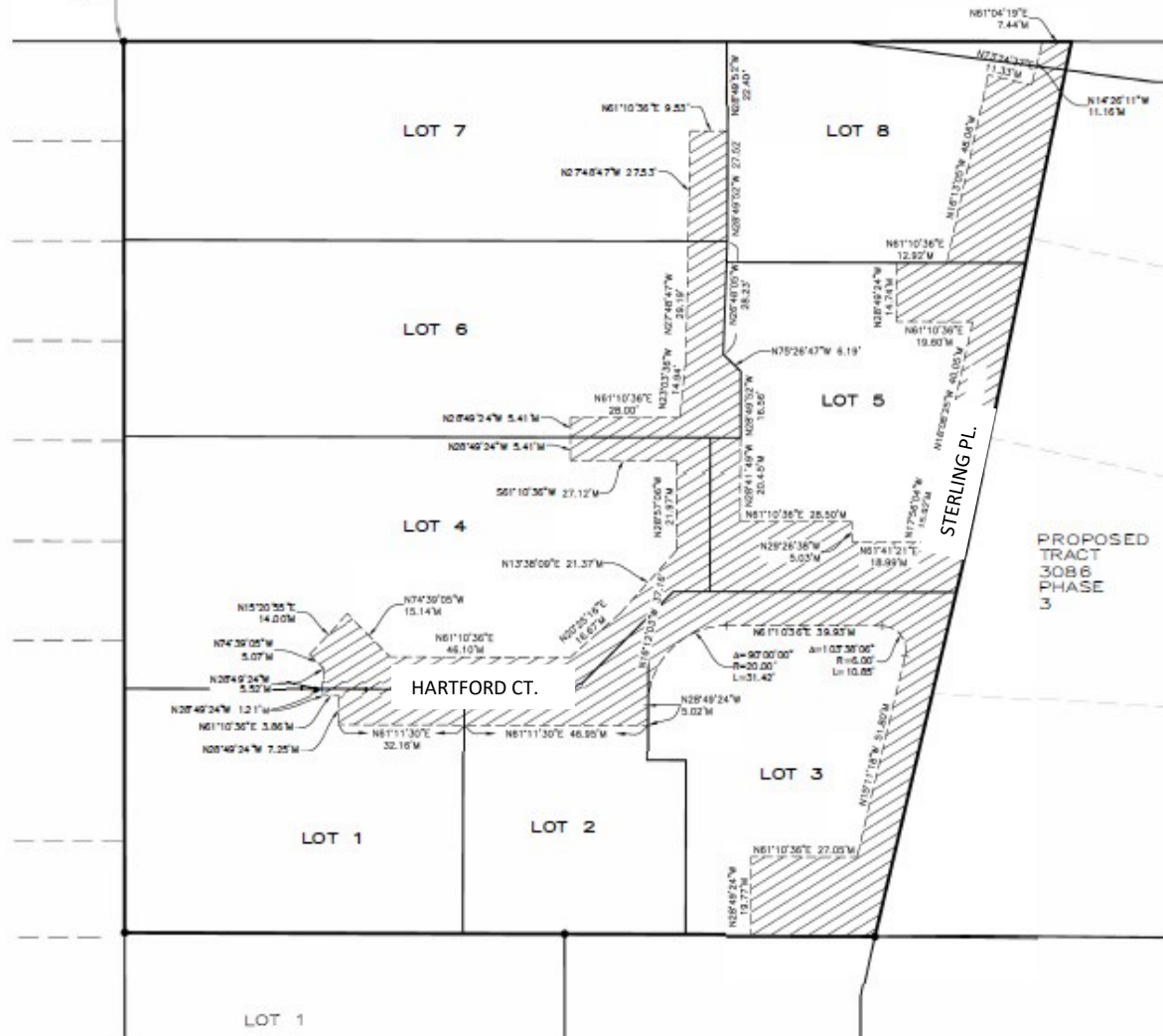




FOUND 3/4" IRON  
PIPE TOE 800'±  
PER R1

## LE POINT STREET



### LEGEND

- SET 5/8" REBAR WITH PLASTIC CAP  
"LS 5702" UNLESS OTHERWISE NOTED
- FOUND 5/8" REBAR WITH PLASTIC CAP "LS 5702"  
UNLESS OTHERWISE NOTED
- M MEASURED
- R RECORD
- INTX INTERSECTION

EMERGENCY VEHICULAR ACCESS EASEMENT,  
COMMERCIAL AREA RECIPROCAL ACCESS & PARKING  
EASEMENT, AND UNDERGROUND PUE PER THIS MAP.

### REFERENCES

R1 35 NB 8-11

### EASEMENT DETAILS

#### TRACT 3086 PHASE 2

A SUBDIVISION OF A PORTION OF BLOCK 38 OF BECKETT'S CROWN  
HILL ADDITION TO THE TOWN OF ARROYO GRANDE AND A PORTION OF  
PACIFIC COAST RAILWAY, ACCORDING TO THE MAP FILED IN BOOK A,  
PAGE 57 OF MAPS IN THE CITY OF ARROYO GRANDE, COUNTY OF  
SAN LUIS OBISPO, STATE OF CALIFORNIA.

**MBS** MICHAEL B. STANTON, PLS 5702  
3329 SOUTH HIGUERA ST.  
SAN LUIS OBISPO, CA 93401  
805-524-1260

May 20, 2022

JOB #13-147

SHEET 3 OF 6 SHEETS