



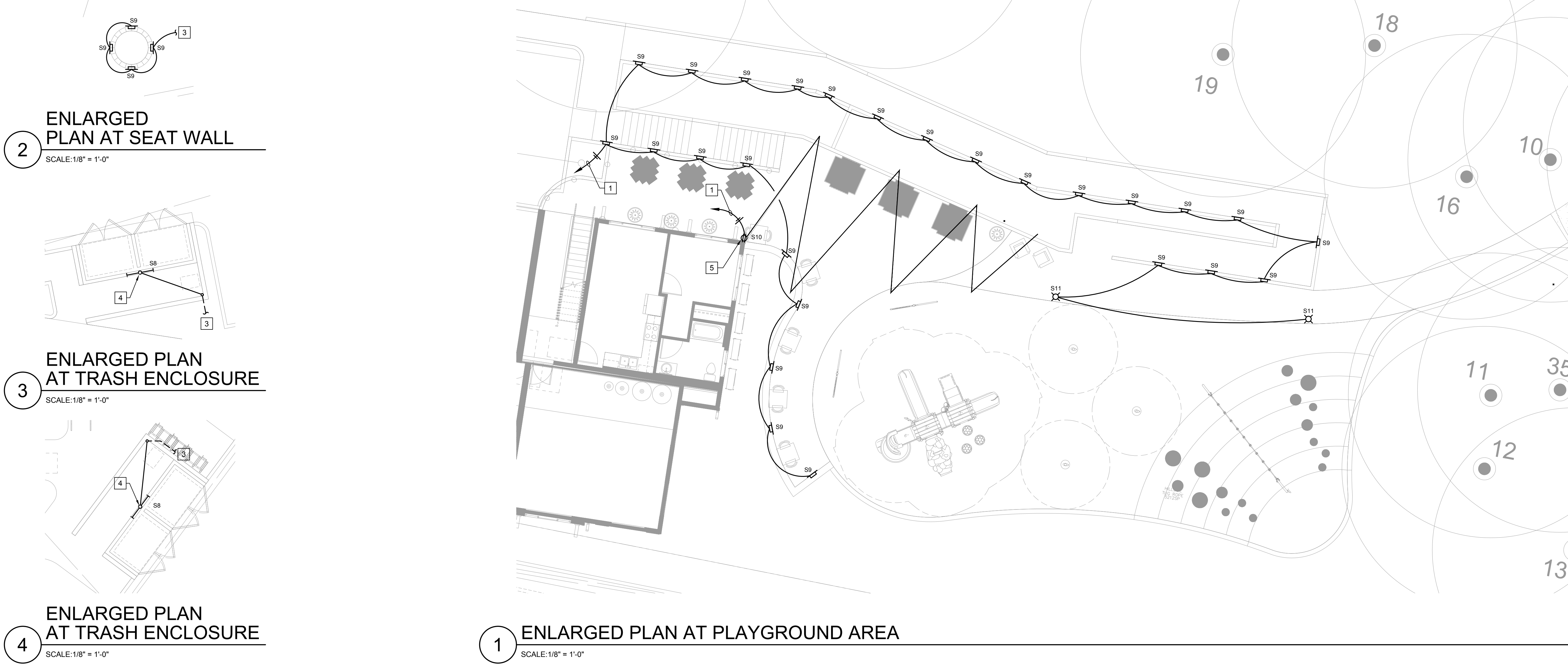
rrmdesign.com | (805) 543-1794
3765 S. Higueru, San Luis Obispo, CA 93401

RRM DESIGN GROUP COPYRIGHT 2021
RRM IS A CALIFORNIA CORPORATION



REFERENCE NOTES

1. ROUTE BRANCH CIRCUIT THROUGH LIGHTING CONTROL PANEL.
2. SEE ENLARGED PLAN FOR CONTINUATION.
3. SEE OVERALL SITE LIGHTING PLAN FOR CONTINUATION.
4. SURFACE MOUNT FIXTURE TO UNDERSIDE OF STANDING SEAM ROOF. SEE LANDSCAPE PLANS FOR TRASH ENCLOSURE ELEVATION.
5. LOCATE WEATHERPROOF, GFI RECEPTACLE HIGH ON WALL FOR CONNECTION TO STRING LIGHTS.



NO.	REVISION	DATE
1		
2		
3		
4		
5		
6		
7		
8		
9		
10		
11		
12		
13		
14		
15		
16		
17		
18		
19		
20		
21		
22		
23		
24		
25		
26		
27		
28		
29		
30		
31		
32		
33		
34		
35		
36		
37		
38		
39		
40		

PROJECT MANAGER	
AZ	
DRAWN BY	CHECKED BY
TR	CJ/JT
DATE	
NOVEMBER 12, 2021	
PROJECT NUMBER	
1812-03-RS21	
SHEET	
ES-102	



Statistics						
Designation	Symbol	Avg	Min	Max	Min/Avg	Max/Avg
PARKING LOT	+	1.6 f.c.	0.5 f.c.	0.4 f.c.	11.3:1	4.0:1
PATH NEAR PLAYGROUND	+	0.2 f.c.	0.5 f.c.	0.1 f.c.	5.0:1	2.0:1
PLAYGROUND AREA	+	1.0 f.c.	2.6 f.c.	0.1 f.c.	26.0:1	10.0:1

Luminaire Locations			
Label	HM	Orientation	TIR
S3	14.00	91.27	0.00
S3	14.00	94.43	0.00
S4	14.00	269.35	0.00
S5	14.00	331.25	0.00
S5	14.00	185.30	0.00
S5	14.00	188.22	0.00
S5	14.00	90.93	0.00
S5	14.00	187.50	0.00
S5	14.00	186.22	0.00
S5	14.00	187.50	0.00
S5	14.00	7.44	0.00
S5	14.00	349.32	0.00
S6	14.00	181.97	0.00
S6	14.00	172.38	0.00
S7	14.00	170.35	0.00
S7	14.00	100.42	0.00
S7	14.00	130.39	0.00
S4	14.00	304.24	0.00
S9	2.00	332.59	0.00
S9	2.00	77.29	0.00
S9	2.00	116.57	0.00
S9	2.00	122.51	0.00
S9	2.00	19.18	0.00
S11	10.00	0.00	0.00
S11	10.00	0.00	0.00
S5	14.00	354.05	0.00

Symbol	Description	Quantity	Unit	Notes
S3	14.00 Luminaire	1	EA	
S4	14.00 Luminaire	1	EA	
S5	14.00 Luminaire	1	EA	
S6	14.00 Luminaire	1	EA	
S7	14.00 Luminaire	1	EA	
S9	2.00 Luminaire	1	EA	
S11	10.00 Luminaire	1	EA	

Application

This LED wall luminaire has a partially shielded light source and is designed for the down lighting of interior and exterior locations with glare-free illumination.

Materials

Luminaire housing constructed of die-cast and spun marine grade, copper free (≤0.3% copper content) A360.0 aluminum alloy
Three-ply opal glass
High temperature silicone gasket

NRTL listed to North American Standards, suitable for wet locations
Protection class IP 44
Weight: 4.0lbs

Electrical

Operating voltage	120-277V AC
Minimum start temperature	-20° C
LED module wattage	8.9 W
System wattage	12 W
Controllability	0-10V dimmable
Color rendering index	Ra > 90
Luminaire lumens	724 lumens (3000K)
Lifetime at Ta = 15° C	500,000 h (L70)
Lifetime at Ta = 40° C	268,000 h (L70)

LED color temperature

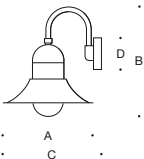
4000K - Product number + **K4**
3500K - Product number + **K35**
3000K - Product number + **K3**
2700K - Product number + **K27**

BEGA can supply you with suitable LED replacement modules for up to 20 years after the purchase of LED luminaires - see website for details

Finish

All BEGA standard finishes are matte, textured polyester powder coat with minimum 3 mil thickness.

Available colors	Black (BLK)	White (WHT)	RAL:
	Bronze (BRZ)	Silver (SLV)	CUS :



LED wall luminaire · partially shielded					
	LED	A	B	C	D
66 411	8.9 W	12 5⁄8	14 1⁄2	13 1⁄2	4 3⁄8

Type:

BEGA Product:

Project:

Modified:

