

COLOR & MATERIAL KEYNOTES

1. (E) "PATINA GREEN" STANDING SEAM METAL ROOF TO REMAIN. (N) TO MATCH (E), TYP.
2. PAINT (E) FASCIAS, POSTS & BEAMS "PATINA GREEN". (N) TO MATCH (E), TYP.
3. (E) "PATINA RED" COPPER GUTTERS & DOWNSPOUTS TO REMAIN. (N) TO MATCH (E), TYP.
4. PAINT (E) & (N) SOFFITS "Crown Paint™: J3-45 Tan Bamboo", TYP.
5. (N) "Western States Metal Roofing: Streaked Rust® - 7/8" Corrugated" METAL SIDING THROUGHOUT, TYP.
6. (E) "BLACK" ALUMINUM DOORS & WINDOWS TO REMAIN, TYP.
7. PAINT RELOCATED CMU TRASH ENCLOSURE "RUST BROWN" TO MATCH MAIN BUILDING, TYP.

1750 PREFUMO CYN. RD. #46
 SAN LUIS OBISPO
 CALIFORNIA 93405
 805.704.5142
 PETER@DANCIART.COM
 WWW.DANCIART.COM

DANCIART
 ARCHITECTURE

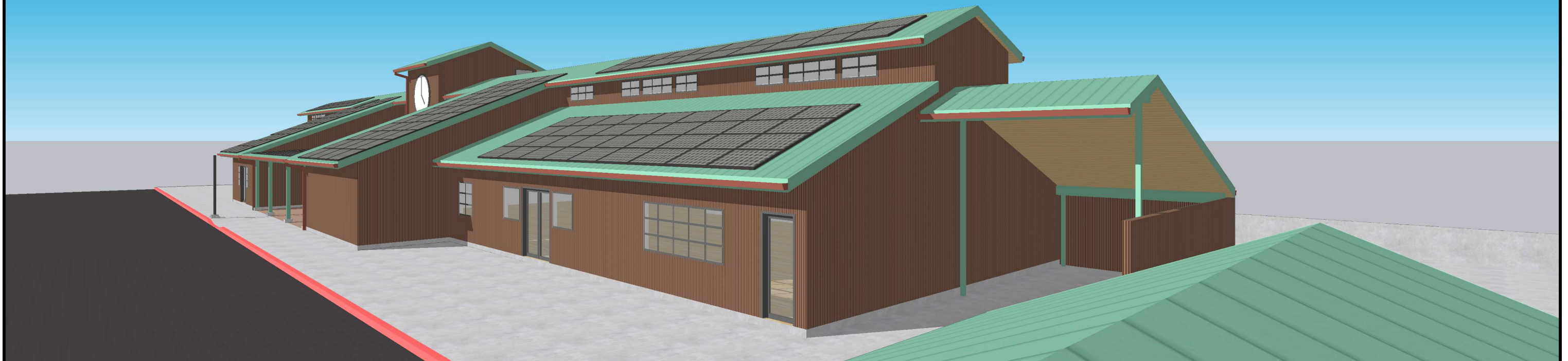
HANSEN PROJECT
 168 STATION WAY
 ARROYO GRANDE, CA 93420
 APN: 007-482-025

| DATE | PROJECT NUMBER | SHEET NAME | SHEET NUMBER |
|-----------|-------------------|-------------|--------------|
| 18 JUN 24 | 011 120 24A | COLOR BOARD | CB1 |

AS VIEWED FROM STATION WAY



AS VIEWED FROM TRAFFIC WAY



1750 PREFUMO CYN. RD. #46
 SAN LUIS OBISPO
 CALIFORNIA 93405
 805.704.5142
 PETER@DANCIART.COM
 WWW.DANCIART.COM

DANCIART
 ARCHITECTURE

HANSEN PROJECT
 168 STATION WAY
 ARROYO GRANDE, CA 93420
 APN: 007-482-025

| DATE | PROJECT NUMBER | SHEET NAME | SHEET NUMBER |
|-----------|-------------------|------------|--------------|
| 18 JUN 24 | 011 120 24A | RENDERS | CB2 |