

**Village Sign inventory**
**ATTACHMENT 1**

ID	Sign	Location	Intent	Shape	Material	Color	Font	Verbiage	Finishing details	Reccomended change	\$ to update
1	City Hall	300 E. Branch	City Facility	1	Wood	Proprietary	Proprietary	City Hall	finial	Replace	\$ 3,000
2	Welcome	Traffic Way	Wayfinding	1	Wood	Proprietary	Proprietary	Welcome	finial	Replace	\$ 4,000
3	Bridge St	110 E. Branch	Wayfinding	1	Wood	Proprietary	Proprietary	Bridge St	finial	Raise, replace	\$ 3,400
4	Car Corral	Car Corral	Parking	1	Wood	Proprietary	Proprietary	Public Parking	finial	Raise, replace	\$ 3,400
5	Centennial Park	Short St	City facility	1	Wood	Proprietary	Proprietary	Park	finial	Raise, replace	\$ 3,400
6	Heritage Sq. Park	Nelson St	City facility	1	Wood	Proprietary	Proprietary	Park	finial	Raise, replace	\$ 3,400
7	Parking	Mason/Branch	Parking	6	Alum	Blue	Garamond	P	N/A	Replace	\$ 400
8	Parking	Mason/LePoint	Parking	6	Alum	Blue	Garamond	P	N/A	Replace	\$ 400
9	Parking	LePoint/Miller	Parking	6	Alum	Blue	Garamond	P	N/A	Replace (both sides)	\$ 800
10	Hoosegow Park	LePoint	City facility	1	Wood	Proprietary	Proprietary	Bridge St	finial	Replace	\$ 3,000
11	Parking	Nevada/Car Corral	Parking	6	Alum	Blue	Garamond	P	N/A	Replace (both sides)	\$ 800
12	Parking	Bridge St/Olohan	Parking	6	Alum	Blue	Garamond	P	N/A	Replace (both sides)	\$ 800
13	Parking	214 E. Branch	Parking	6	Alum	Blue	Garamond	P	N/A	Replace+pole	\$ 1,400
14	Short St	Short St	Wayfinding	1	Wood	Fiji	Garamond	wayfinding	finial	New	\$ 5,000
15	Parking	101 W. Branch	Parking	6	Alum	Fiji	Garamond	P	N/A	New, add to light	\$ 400
16	Wayfinding	Fireman's Park	Wayfinding	1	Wood	Fiji	Garamond	wayfinding	finial	Replace	\$ 3,000
17	Community Center	Branch/Wesley	City facility	6	Alum	Fiji	Garamond	P	N/A	New, replace poles	\$ 3,000
18	Parking	Mason/Olohan	Parking	6	Alum	Fiji	Garamond	P	N/A	New, add to light	\$ 400
										<b>Total</b>	<b>\$ 40,000</b>

1



2



3



4



5



6



7



8



9





10



11



12



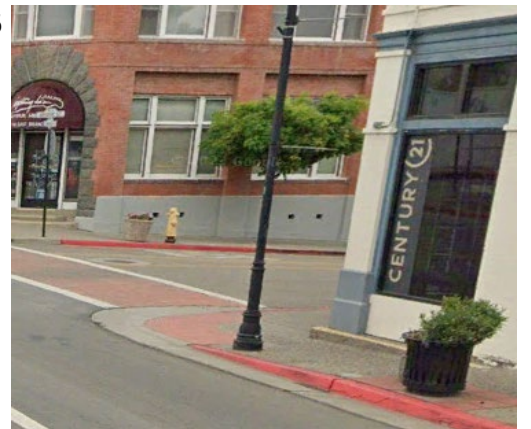
13



14



15



16



17



18

